
Big Question 6, Bible Truth 2 Storyboard Background Pictures Key (BG)

Put these pictures in place on your storyboard BEFORE you tell your story.

BG1 Land



BG1 Land (and mountains) are felt pieces. Secure them on flannelgraph board with velcro.

BG2 Sun and Blue Sky



BG3 Ark Window Shutter



Big Question 6, Bible Truth 2 Storyboard Pictures Key (SB)

Store these pictures in numerical order in your DDD Bible Folder.

Add these to your story as you tell it. Numbers correspond to placement order.

SB1 Animals Fighting



SB2 Weeds among Plants



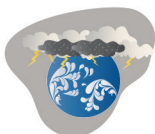
SB3 Sin's Sad Effect on People



SB4 God Is Holy



SB5 Send a Flood



SB6 God's Good Plan of Mercy



SB7 God Tells Noah about the Flood



SB8 Noah Believes and Obeys



SB9 Getting Trees for Ark



SB10 Cutting Trees for Ark



SB11 Tar for the Ark



SB12 The Ark



SB13 The Ark Door



SB14 People Wonder and Noah Warns



SB15 Supplies for Ark



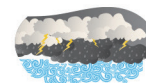
SB16 Creatures Coming



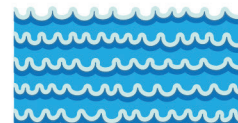
SB17 Noah and Family



SB18 Stormy Sky and Rain



SB19A,B,C Water



SB20 Strong Wind



SB21 Noah Presenting Worship Gifts



SB22 Rainbow



SB23 Sinful Hearts



SB24 Love for God



SB25 Jesus, the Savior Comes



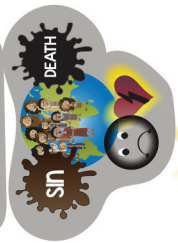
Note: Use sticky tac putty rather than velcro on back of pictures placed on top of other pictures.



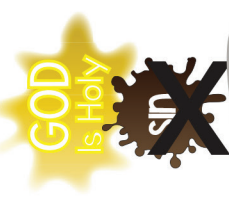
SB1



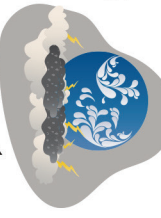
SB2



SB3



SB4



SB5



SB6



SB25



SB18

SB22

BG2

SB20

Add strips of water to cover earth. Raise ark as the water rises. Reverse process as water recedes.

SB12



BG1



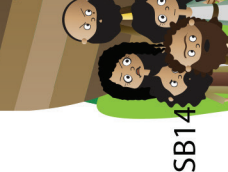
BG3 covers window



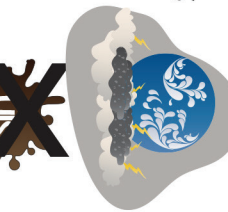
SB17



SB14



SB23



SB24



SB7



SB9



SB10



SB13



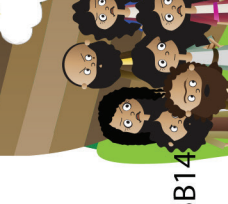
SB16



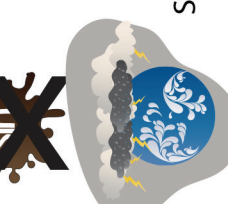
SB15



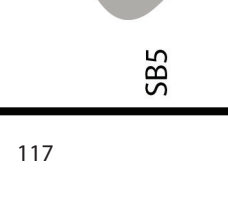
SB7



SB7



SB7



SB7



SB8



SB8



SB8



SB8



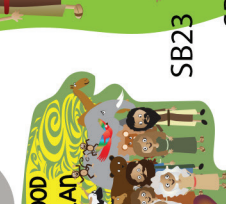
SB8



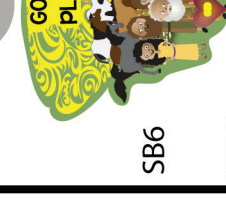
SB8



SB8



SB8



SB8



SB8



SB19

Note:

The ground and mountains are felt pieces attached to the flannelgraph with velcro on the back.

NOTE:

Some of the larger images are assembled from two or more pages. You can make these easier to fold by leaving a small gap in the lamination between the pieces. This allows you to fold the image along the gap.



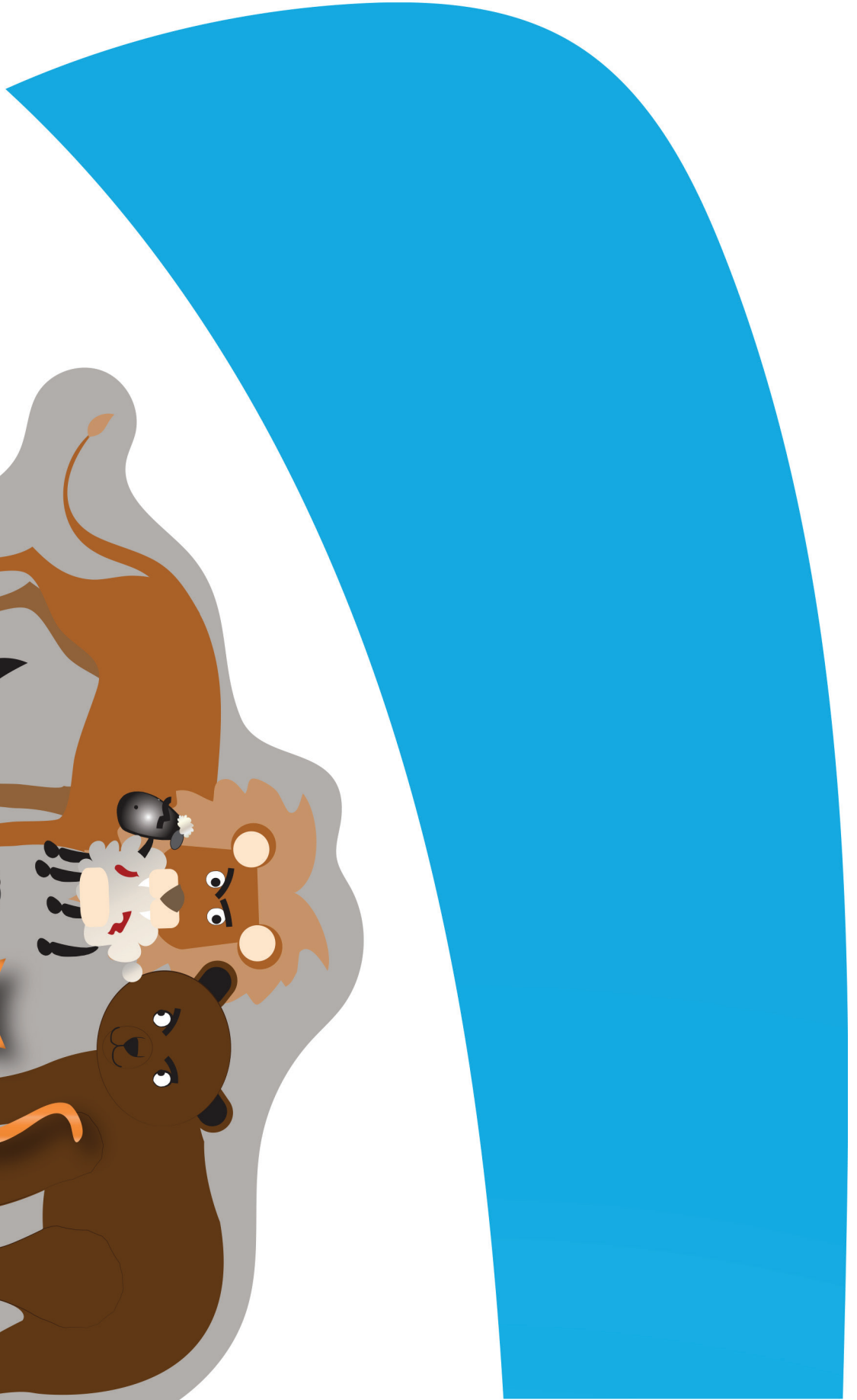
leave slight gap here
to create a "hinge" for
easy folding



SB21 Noah Presenting
Worship Gifts
DDD 6.2 Story



SB25 Jesus, the Savior Comes
DDD 6.2 Story



SBI Animals Fighting
DDD 6.2 Story

BG2 Sun and Blue Sky pt 1 of 4
DDD 6.2 Story
Place on Board BEFORE telling story
Glue Together and Laminate

GOD
Is Holy



BG2 Sun and Blue Sky pt 2 of 4
DDD 6.2 Story
Place on Board BEFORE telling story
Glue Together and Laminate

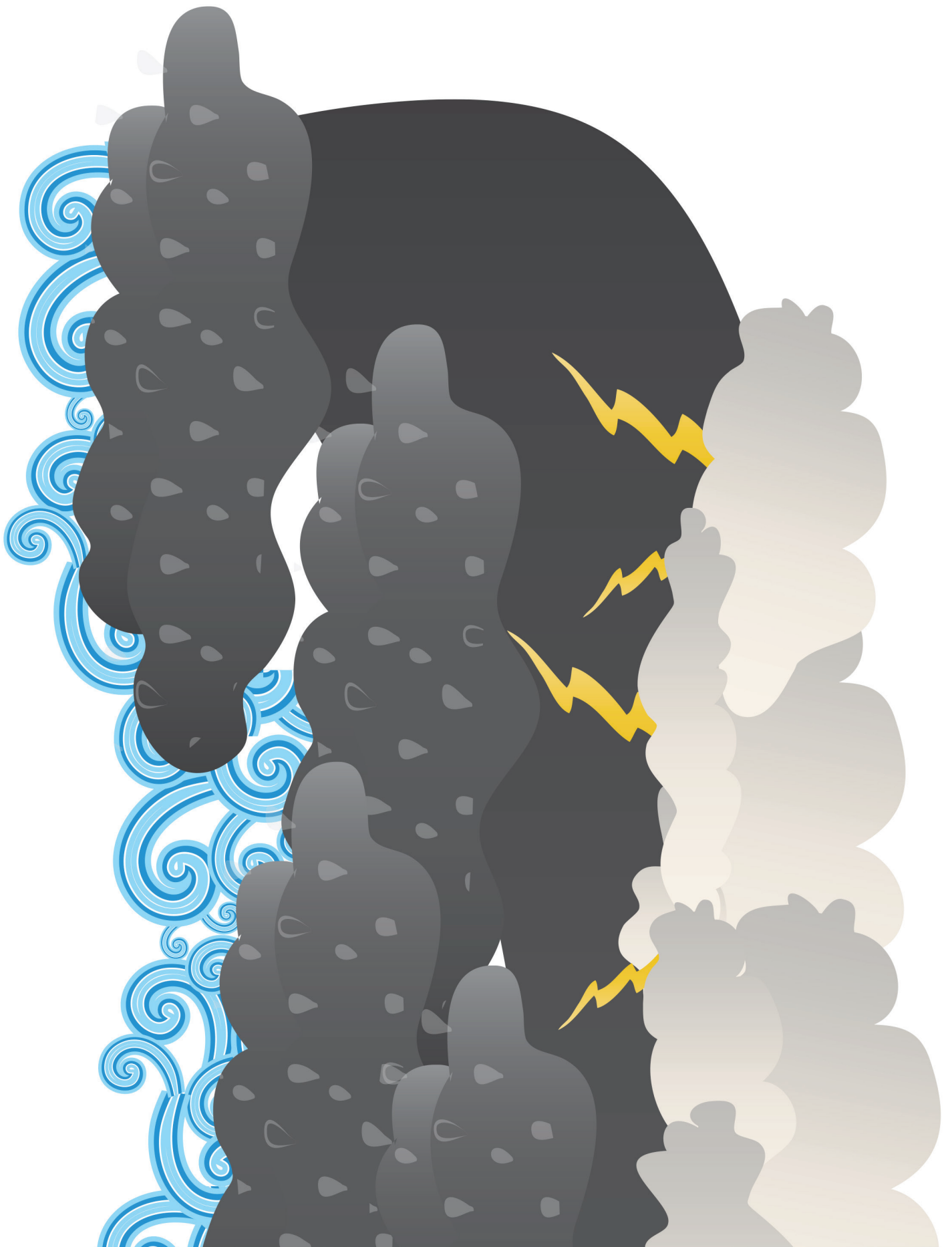
SB4 God Is Holy
DDD 6.2 Story



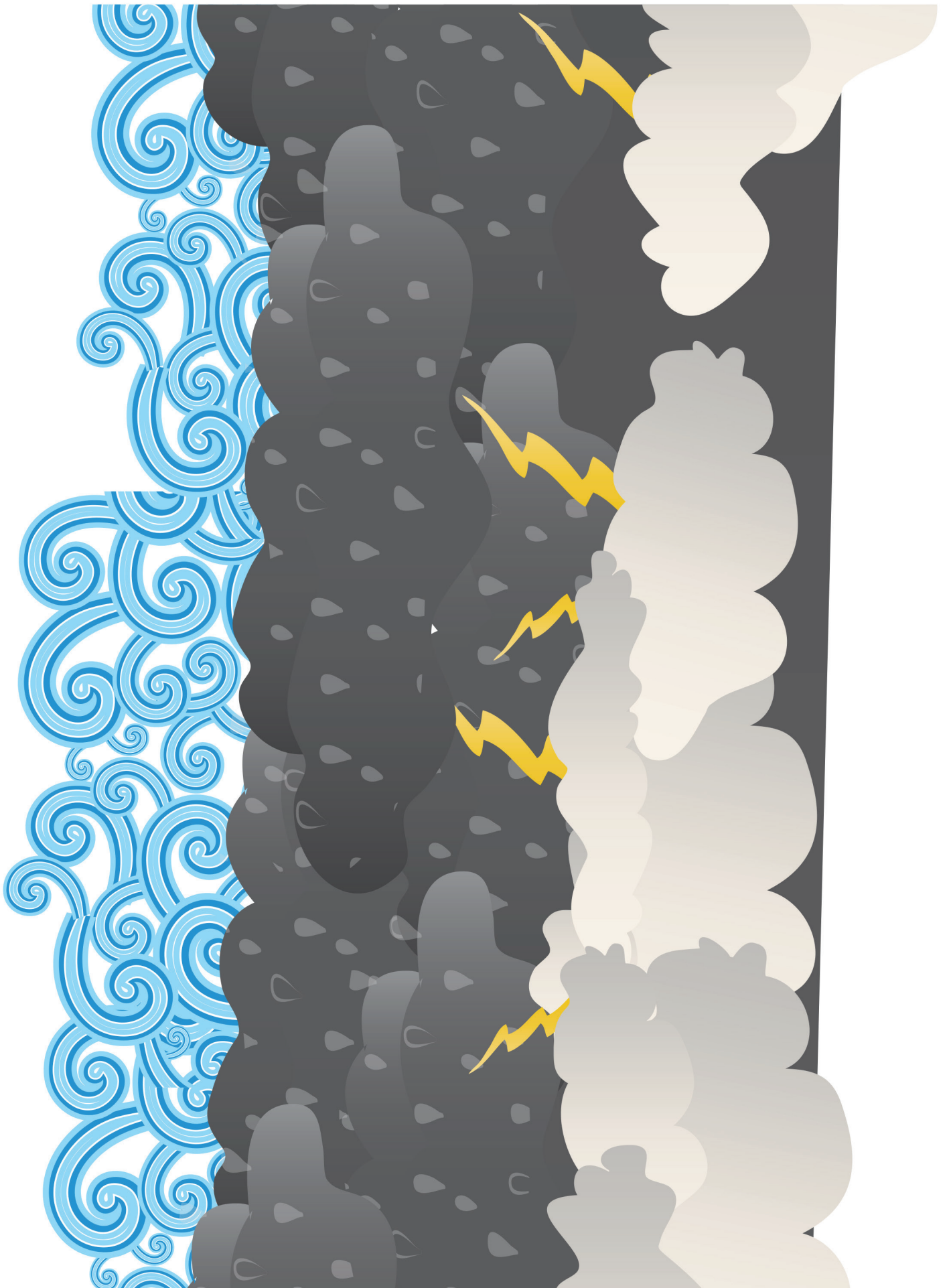
BG2 Sun and Blue Sky pt 3 of 4
DDD 6.2 Story
Place on Board BEFORE telling story
Glue Together and Laminate



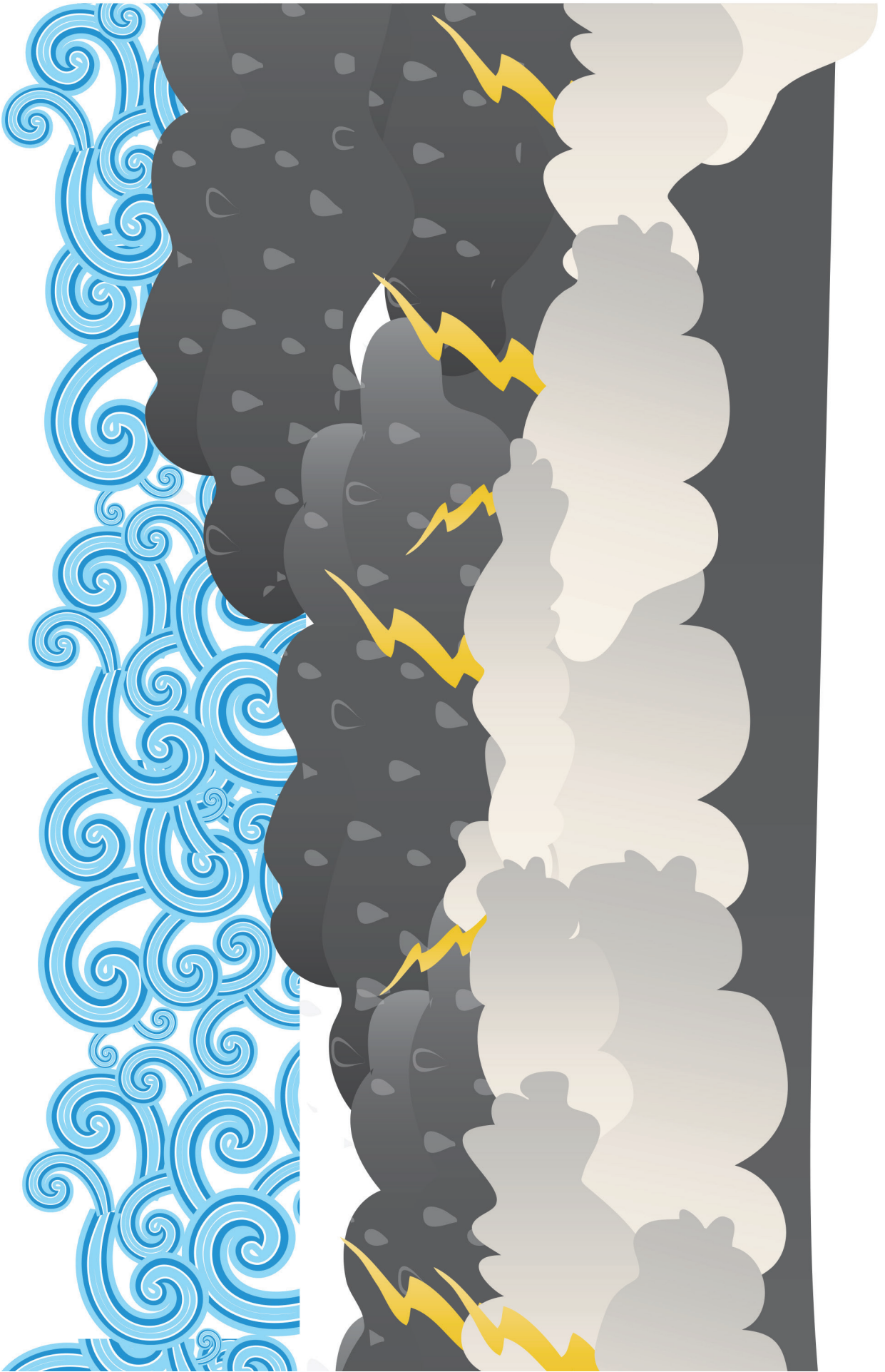
BG2 Sun and Blue Sky pt 4 of 4
DDD 6.2 Story
Place on Board BEFORE telling story
Glue Together and Laminate



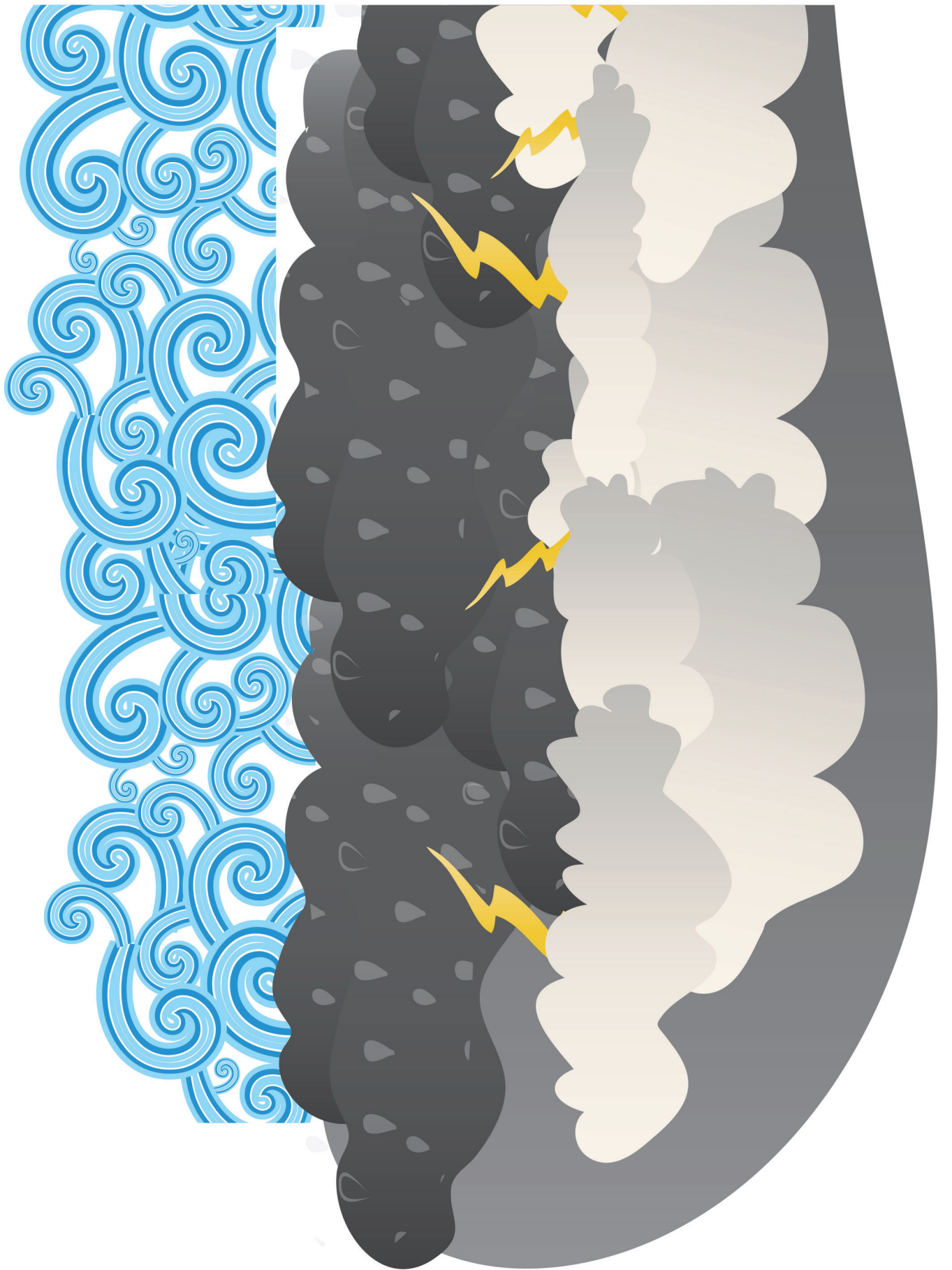
SB18 Stormy Sky and Rain pt 1 of 4
DDD 6.2 Story
Glue Together and Laminate



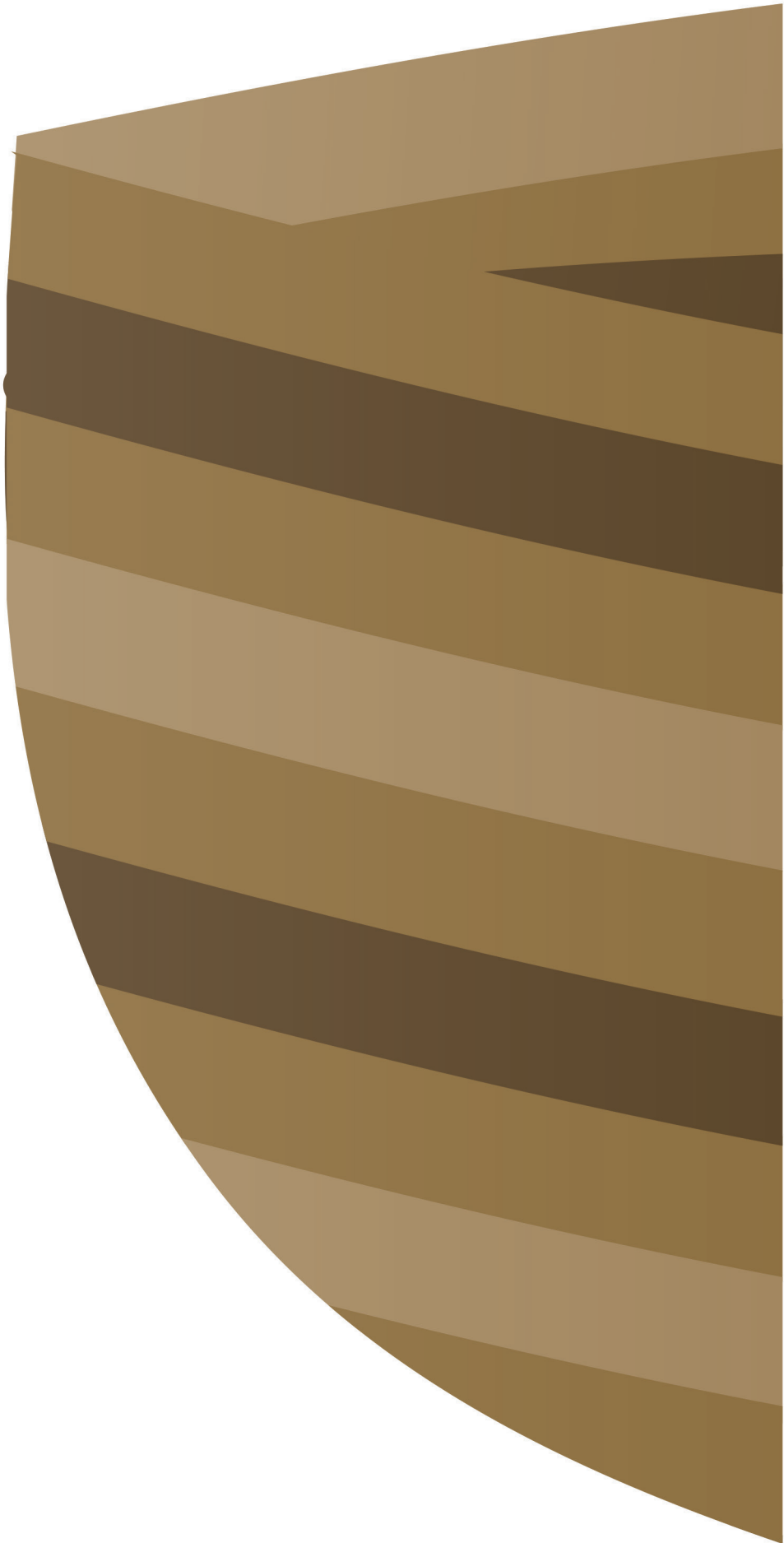
SB18 Stormy Sky and Rain pt 2 of 4
DDD 6.2 Story
Glue Together and Laminate



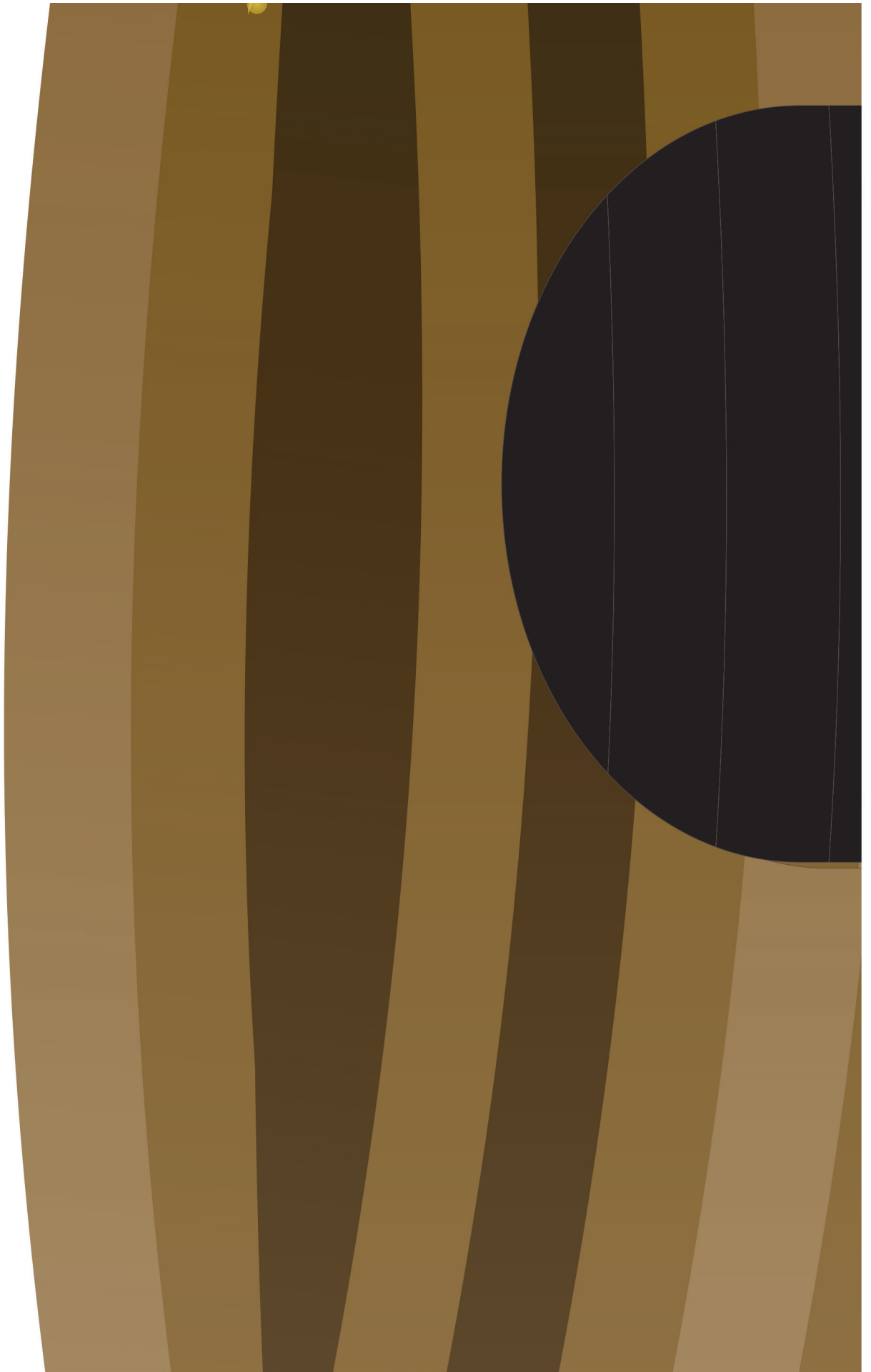
SB18 Stormy Sky and Rain pt 3 of 4
DDD 6.2 Story
Glue Together and Laminate



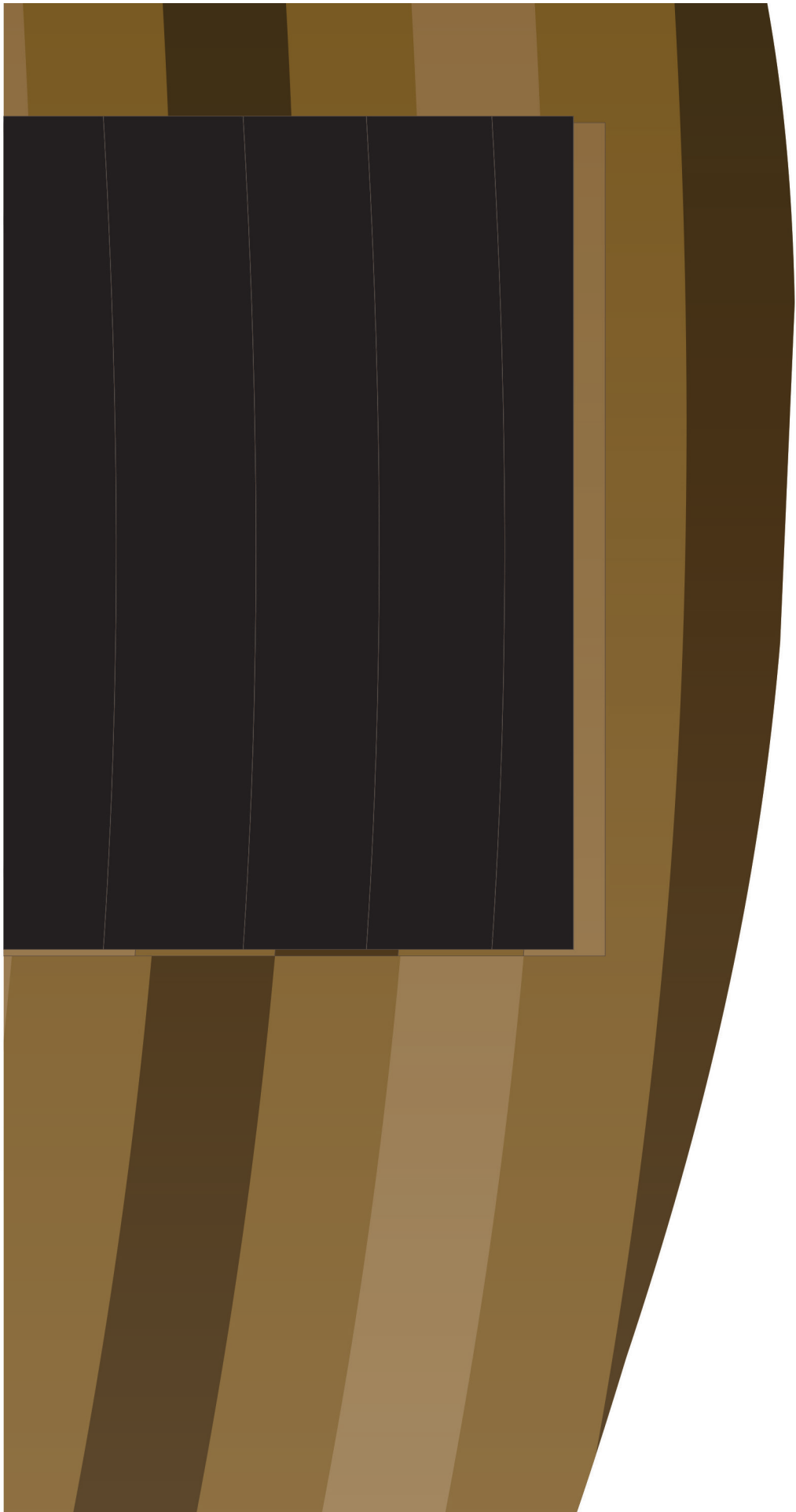
SB18 Stormy Sky and Rain pt 4 of 4
DDD 6.2 Story
Glue Together and Laminate



SB12 The Ark pt 1 of 5
DDD 6.2 Story
Glue Together and Laminate



SB12 The Ark pt 2 of 5
DDD 6.2 Story
Glue Together and Laminate



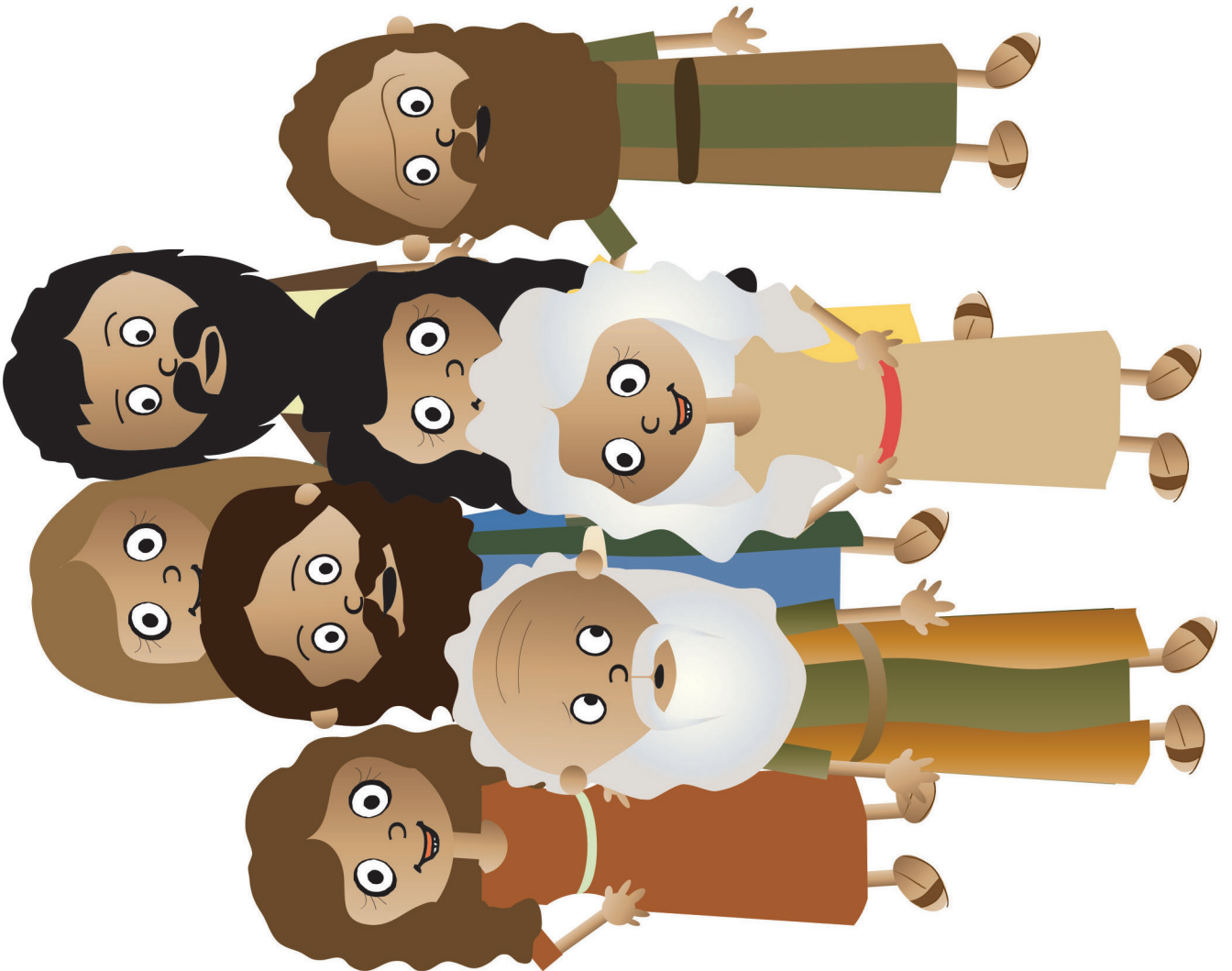
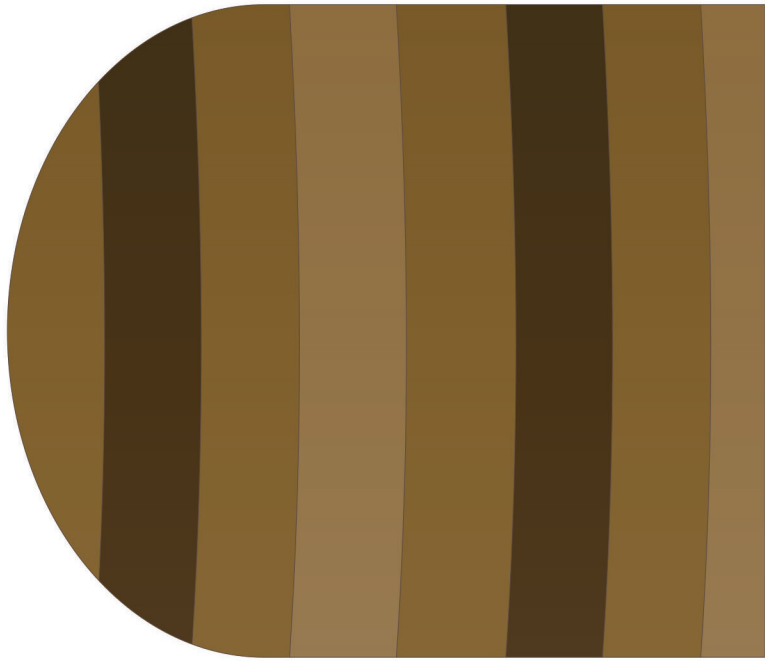
SB12 The Ark pt 3 of 5
DDD 6.2 Story
Glue Together and Laminate



SB12 The Ark pt 4 of 5
DDD 6.2 Story
Glue Together and Laminate

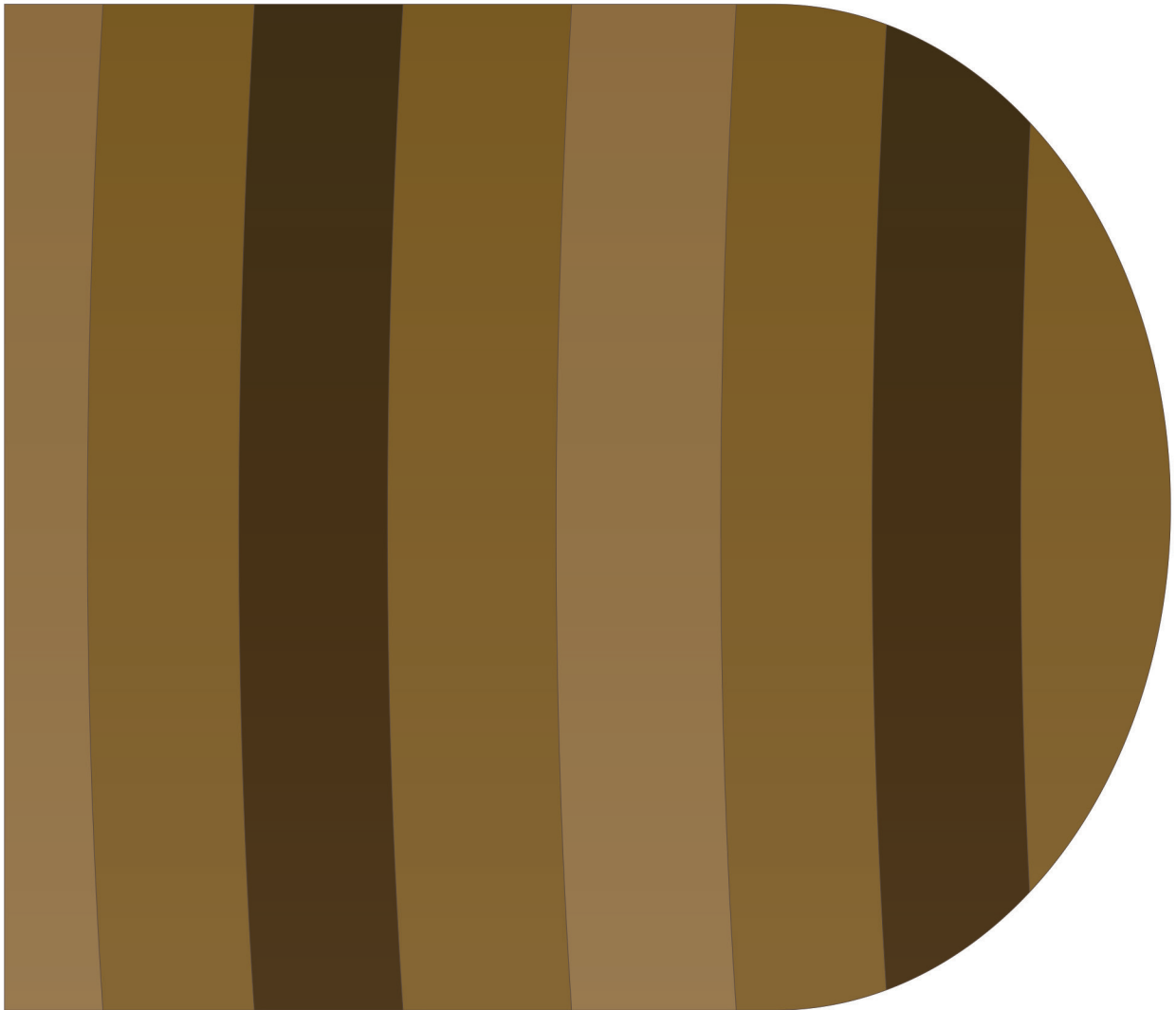


SB12 The Ark pt 5 of 5
DDD 6.2 Story
Glue Together and Laminate



BG3 The Ark Window
DDD 6.2 Story
Place over window opening
BEFORE telling story

SB17 Noah and Family
DDD 6.2 Story



SB20 Strong Wind Pt 1 of 2
DDD 6.2 Story
Glue Together and Laminate

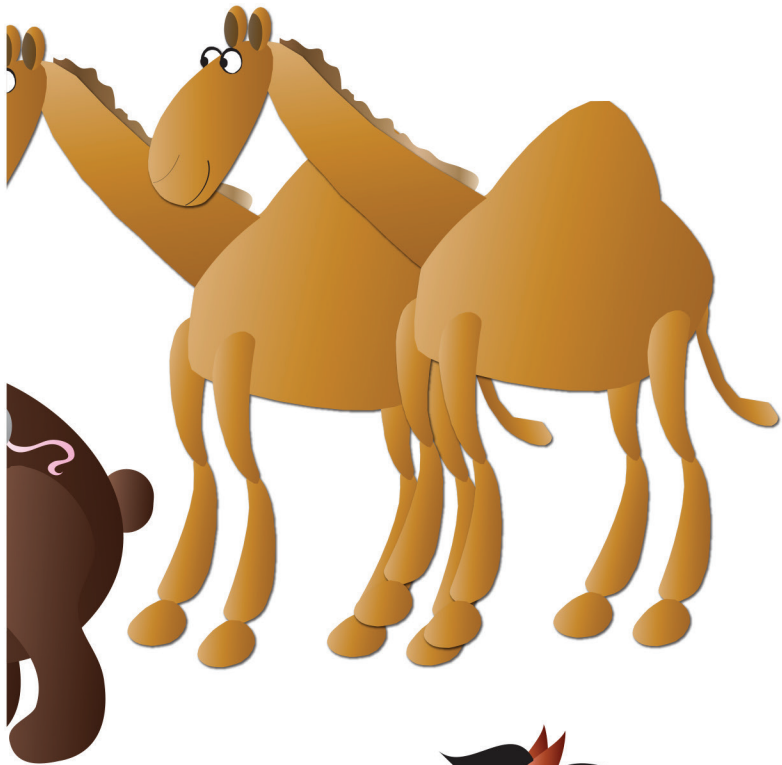
SB13 The Ark Door
DDD 6.2 Story



SB20 Strong Wind Pt 2 of 2
DDD 6.2 Story
Glue Together and Laminate



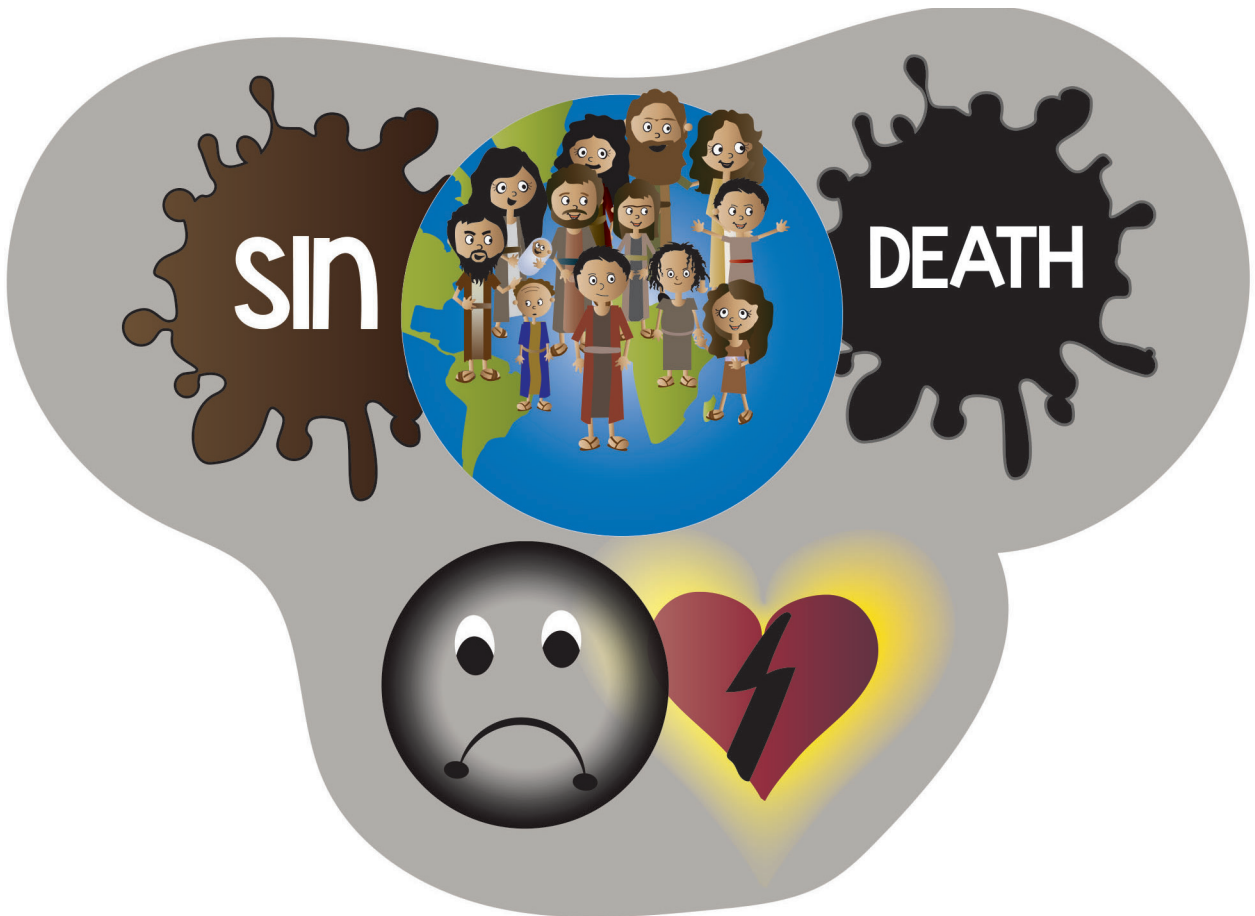
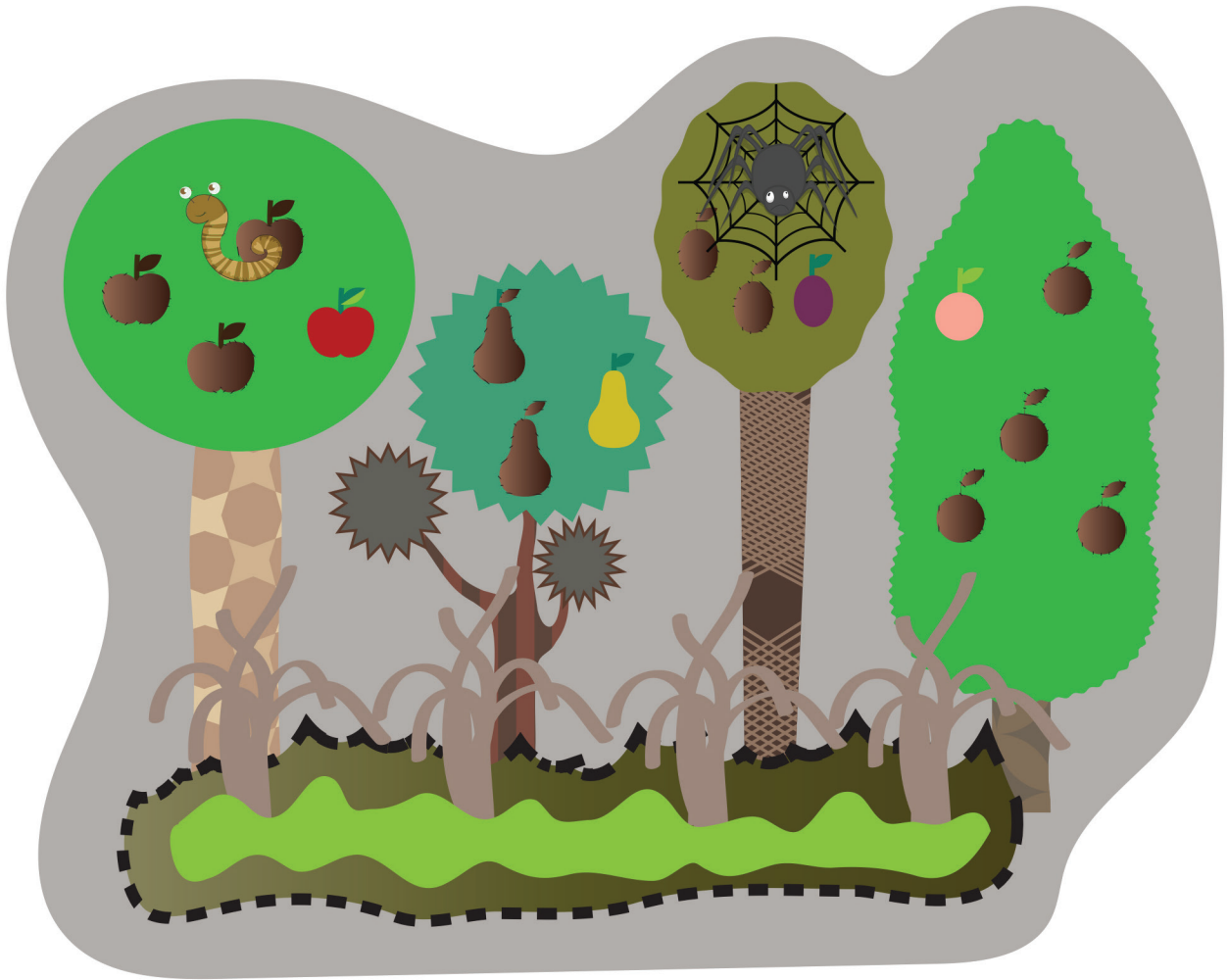
SB16 Creatures Coming Pt 1 of 3
DDD 6.2 Story
Glue Together and Laminate



SB16 Creatures Coming Pt 2 of 3
DDD 6.2 Story
Glue Together and Laminate



SB16 Creatures Coming Pt 3 of 3
DDD 6.2 Story
Glue Together and Laminate



SB2 Weeds among Plants
DDD 6.2 Story

SB3 Sin's Sad Effect
on People
DDD 6.2 Story



SB5 Send a Flood
DDD 6.2 Story

SB6 God's Good Plan
of Mercy
DDD 6.2 Story



SB23 Sinful Hearts
DDD 6.2 Story

SB24 Love for God
DDD 6.2 Story

SB11 Tar for the Ark
DDD 6.2 Story

SB10 Getting Trees
for Ark
DDD 6.2 Story



SB14 People Wonder and
Noah Warns
DDD 6.2 Story



SB22 Rainbow Pt 1 of 3
DDD 6.2 Story

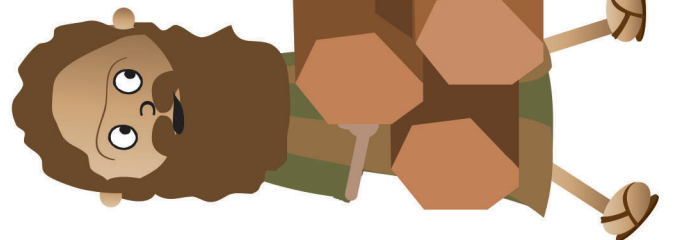
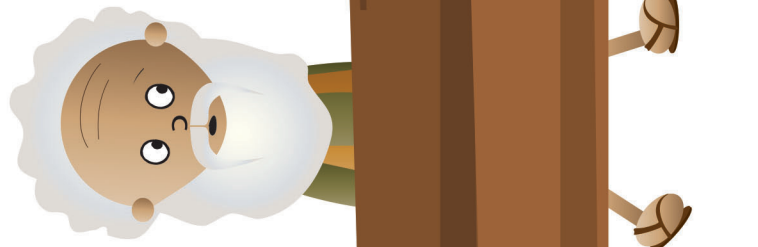
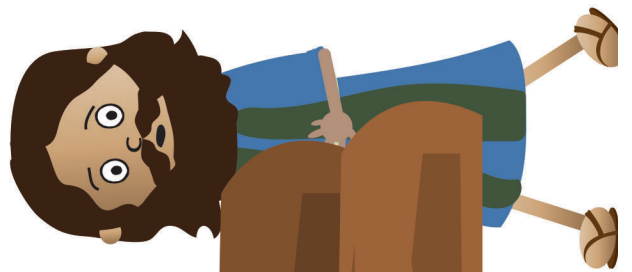


SB22 Rainbow Pt 2 of 3
DDD 6.2 Story

SB15 Supplies for Ark
DDD 6.2 Story



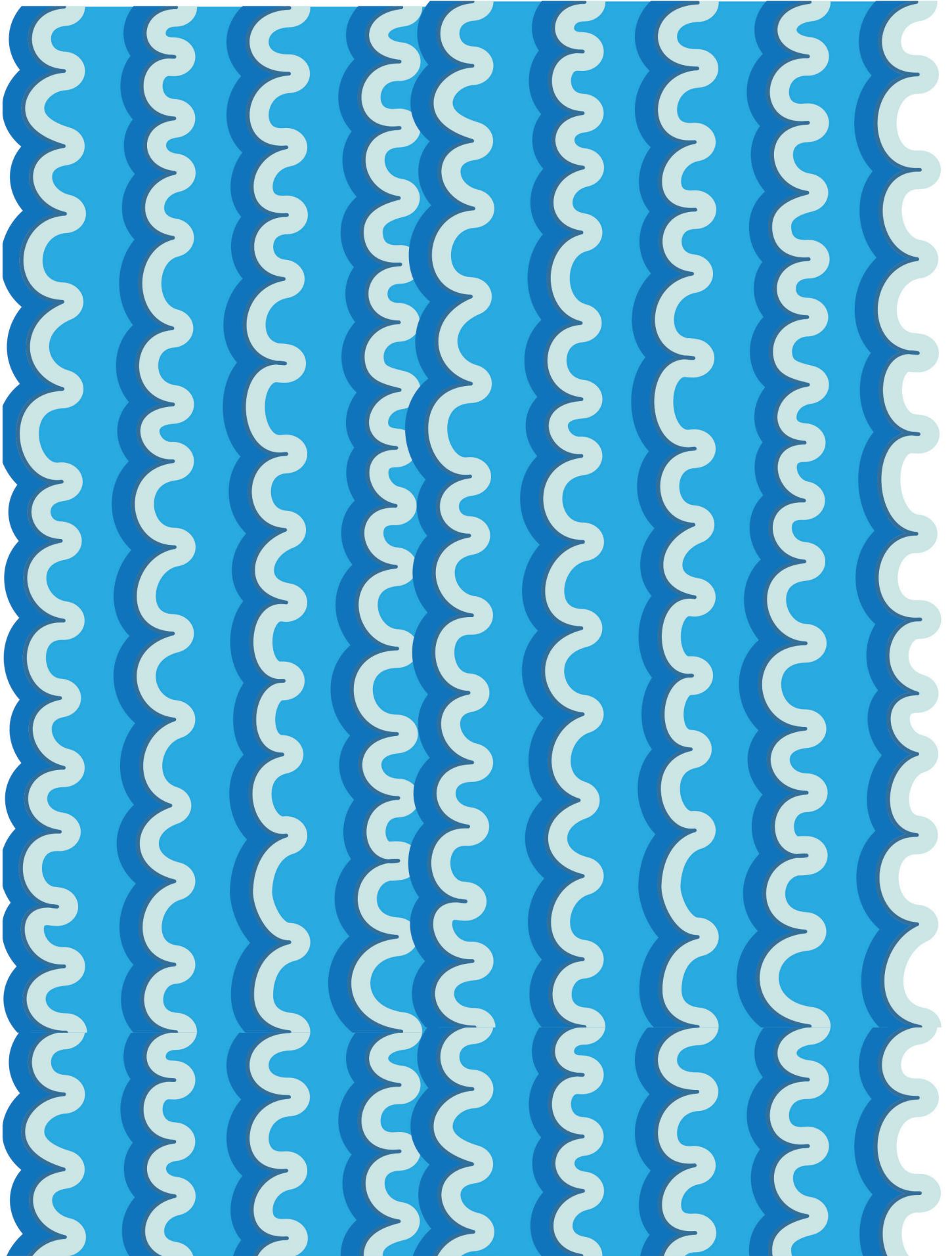
SB22 Rainbow Pt 3 of 3
DDD 6.2 Story



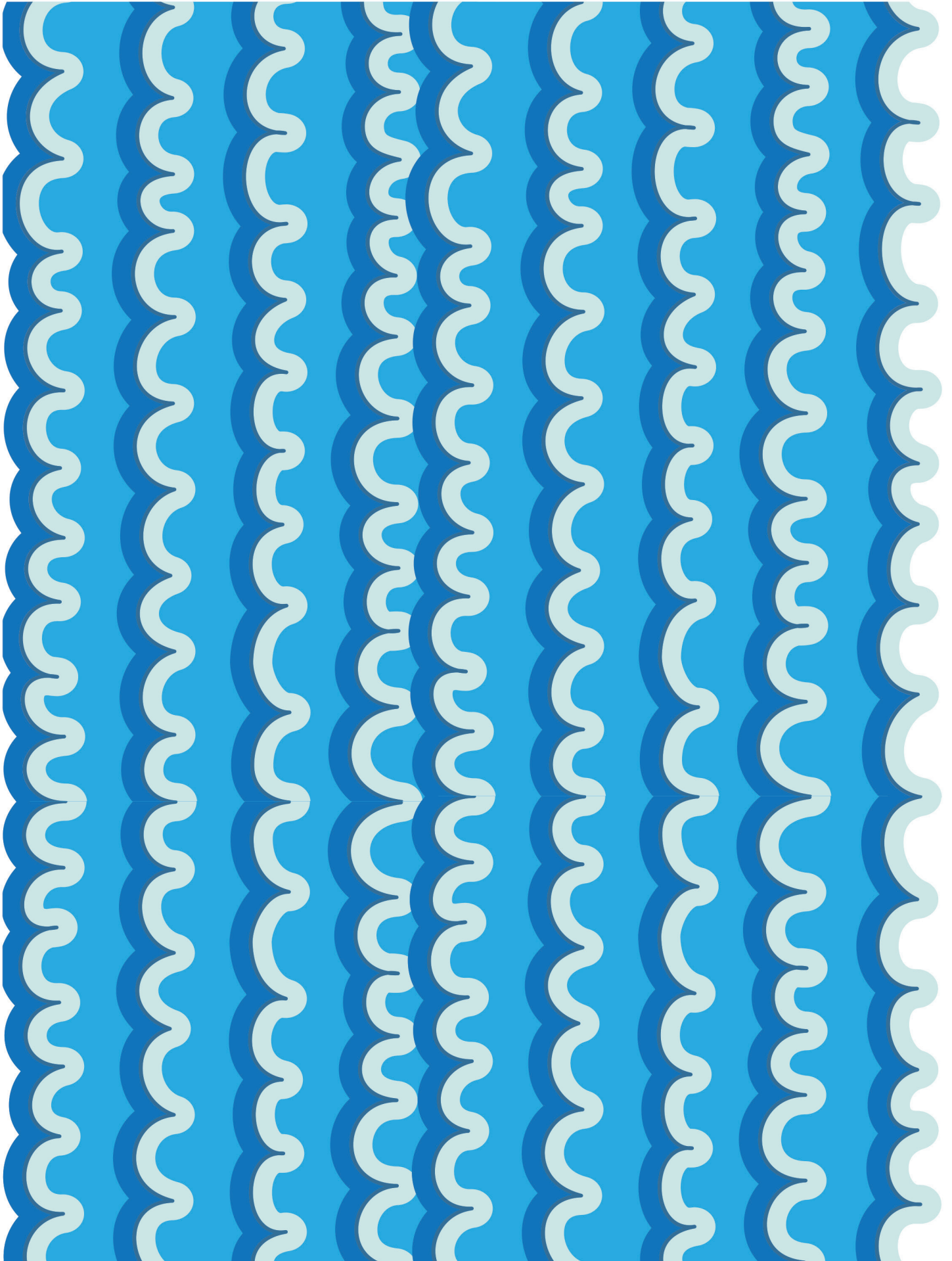
SB8 Noah Believes
and Obeys
DDD 6.2 Story

SB7 God Tells Noah
about the Flood
DDD 6.2 Story

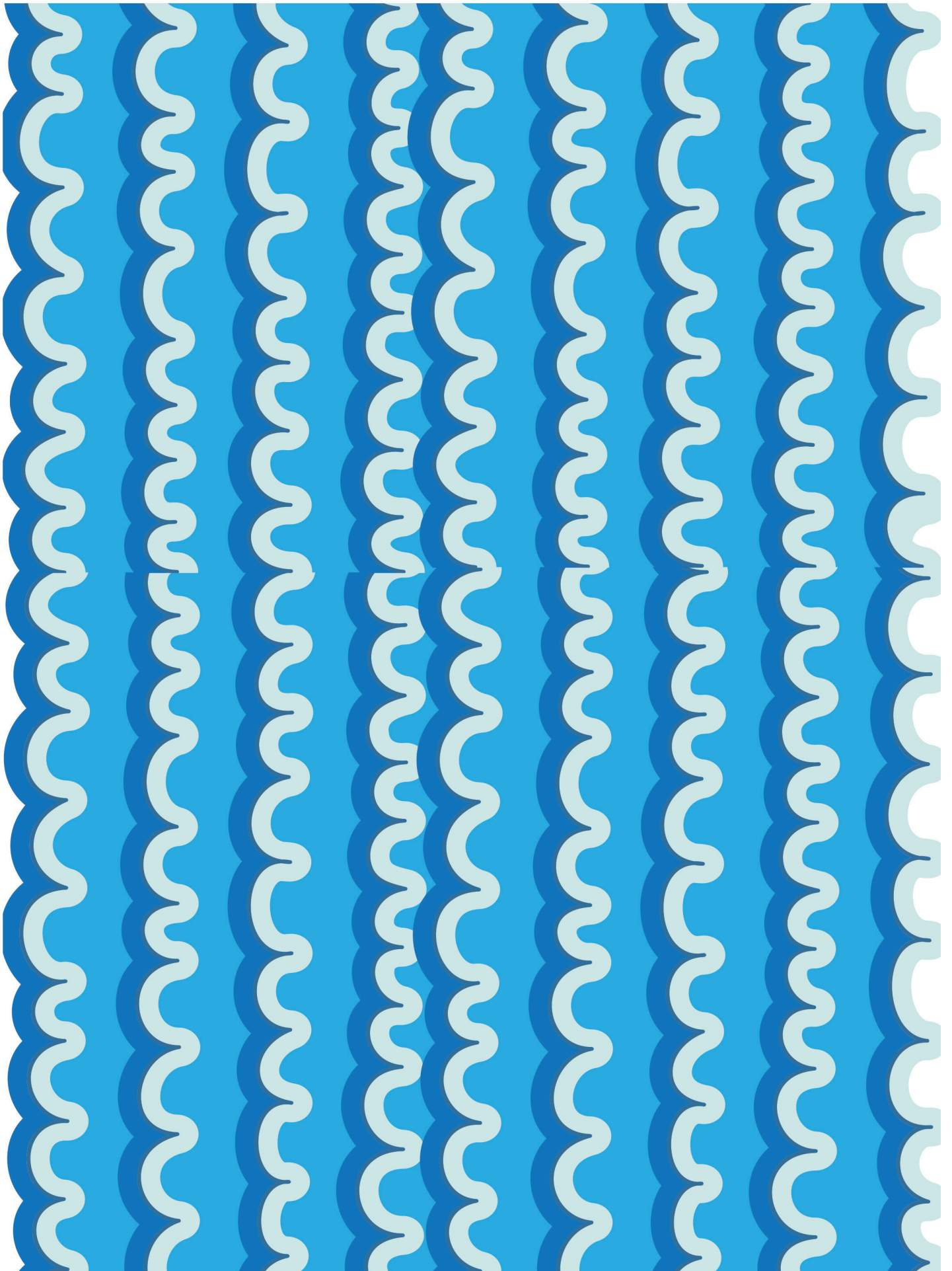
SB10 Cutting Trees for Ark
DDD 6.2 Story



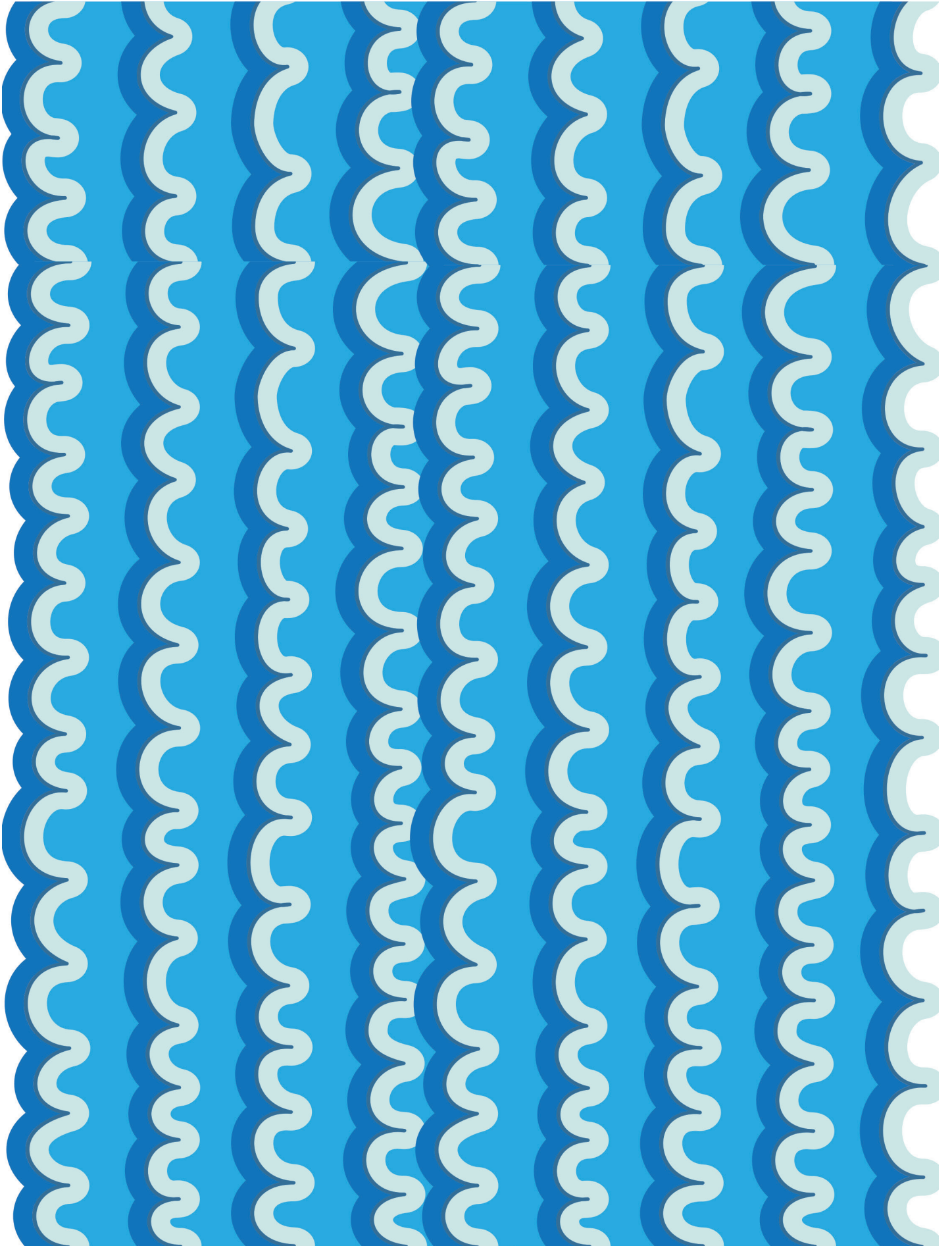
SB19A Water Pt 1 of 4
DDD 6.2 Story



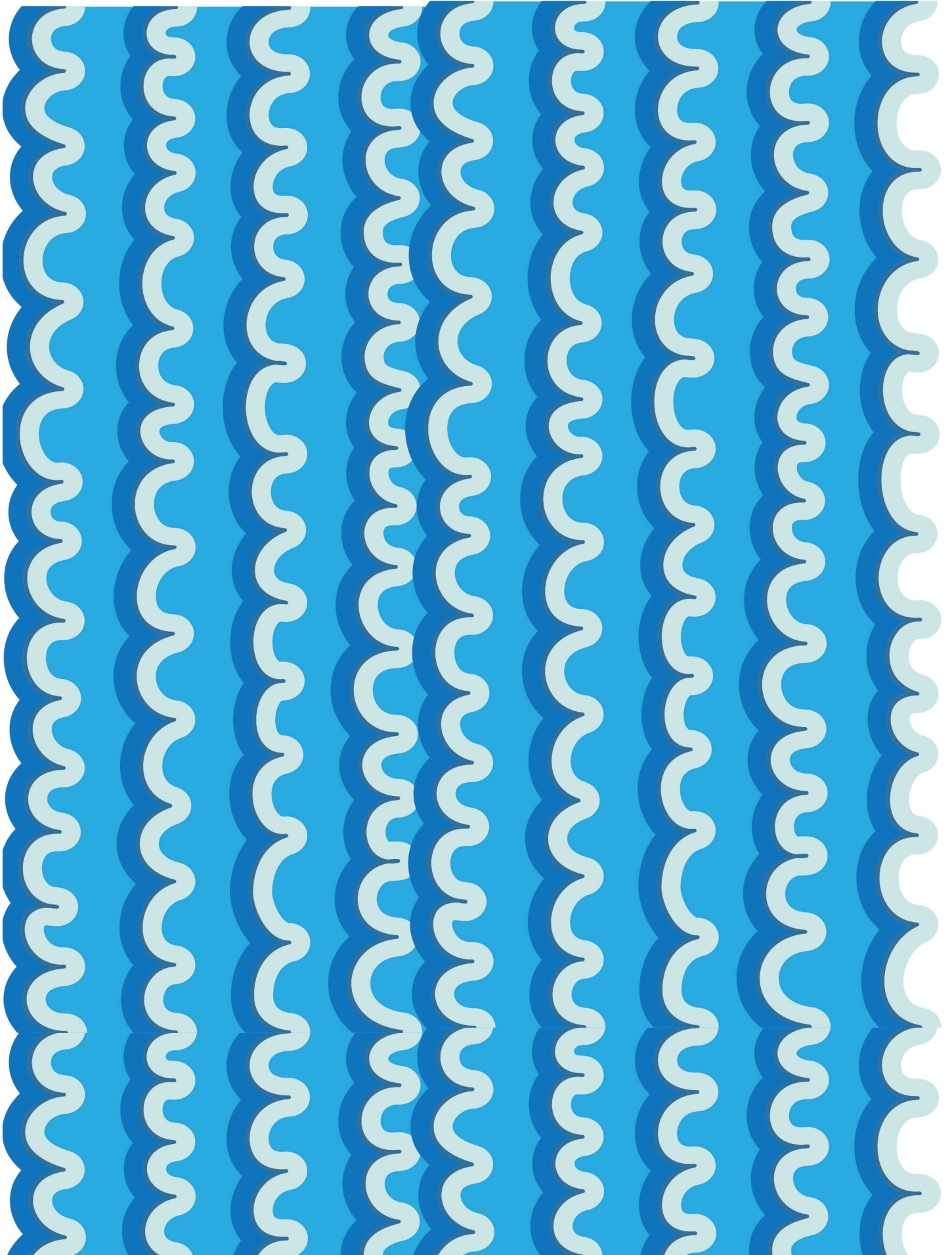
SB19A - Water Pt 2 of 4
DDD 6.2 Story



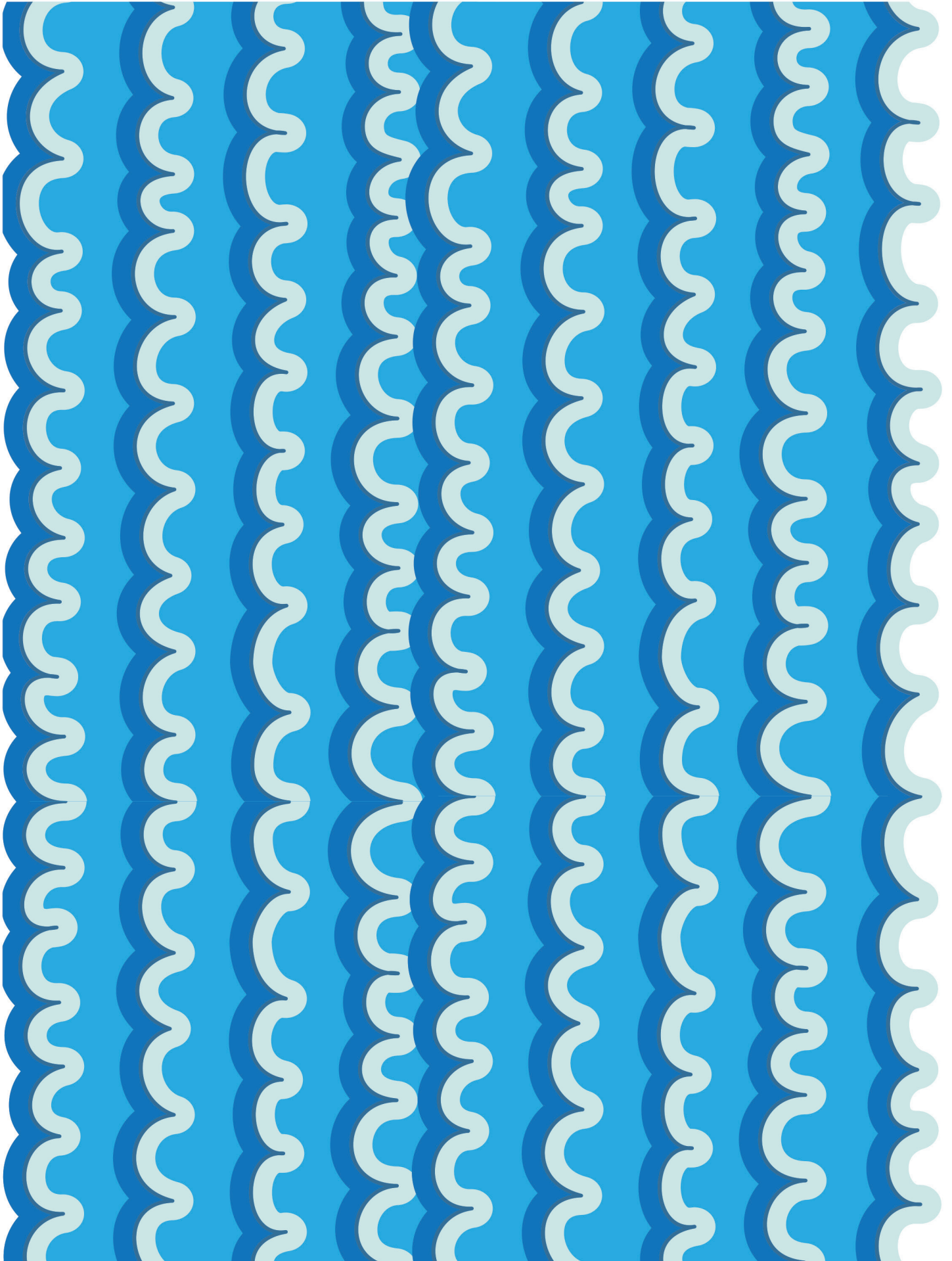
SB19A Water Pt 3 of 4
DDD 6.2 Story



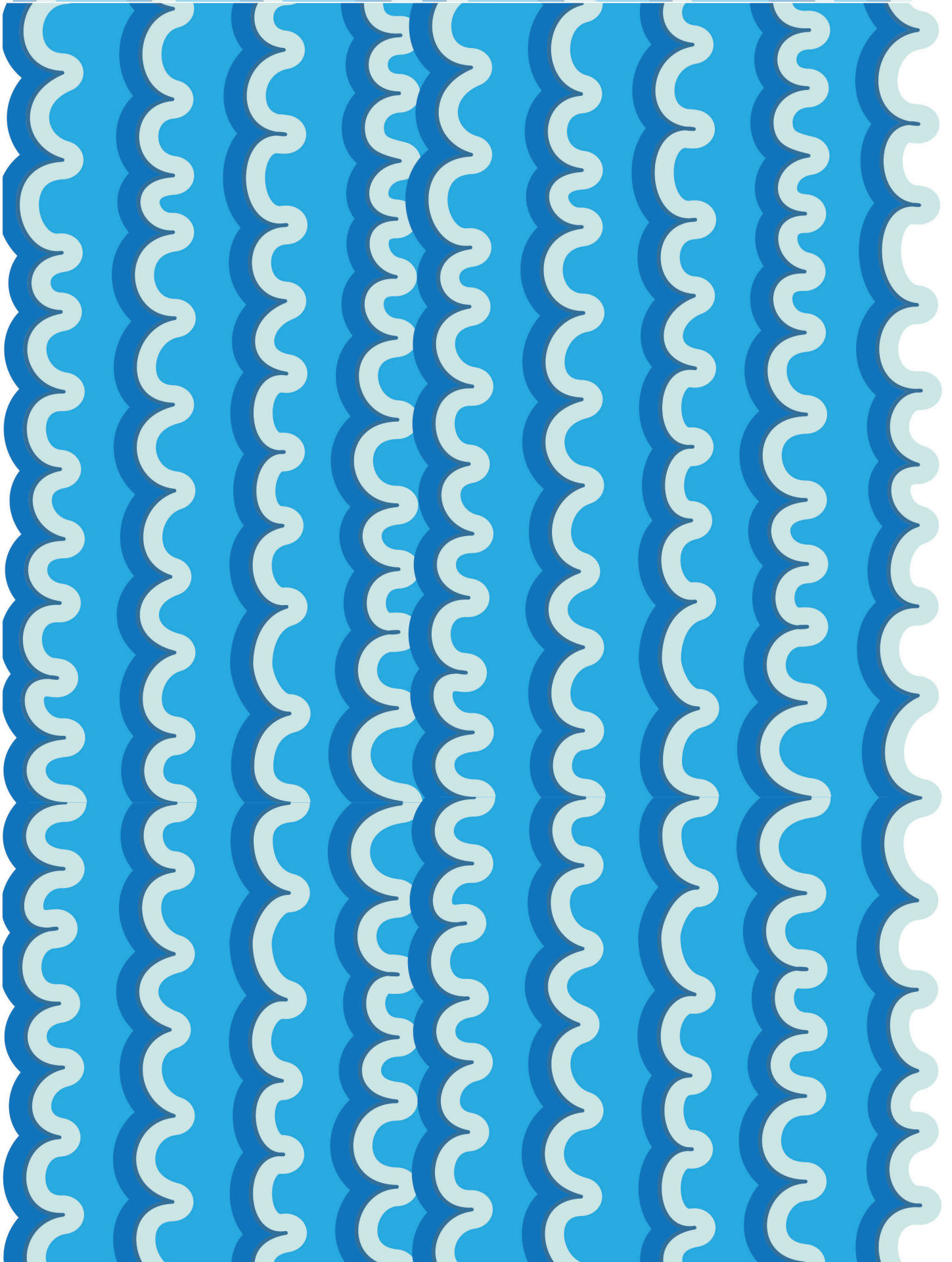
SBI19A Water Pt 4 of 4
DDD 6.2 Story



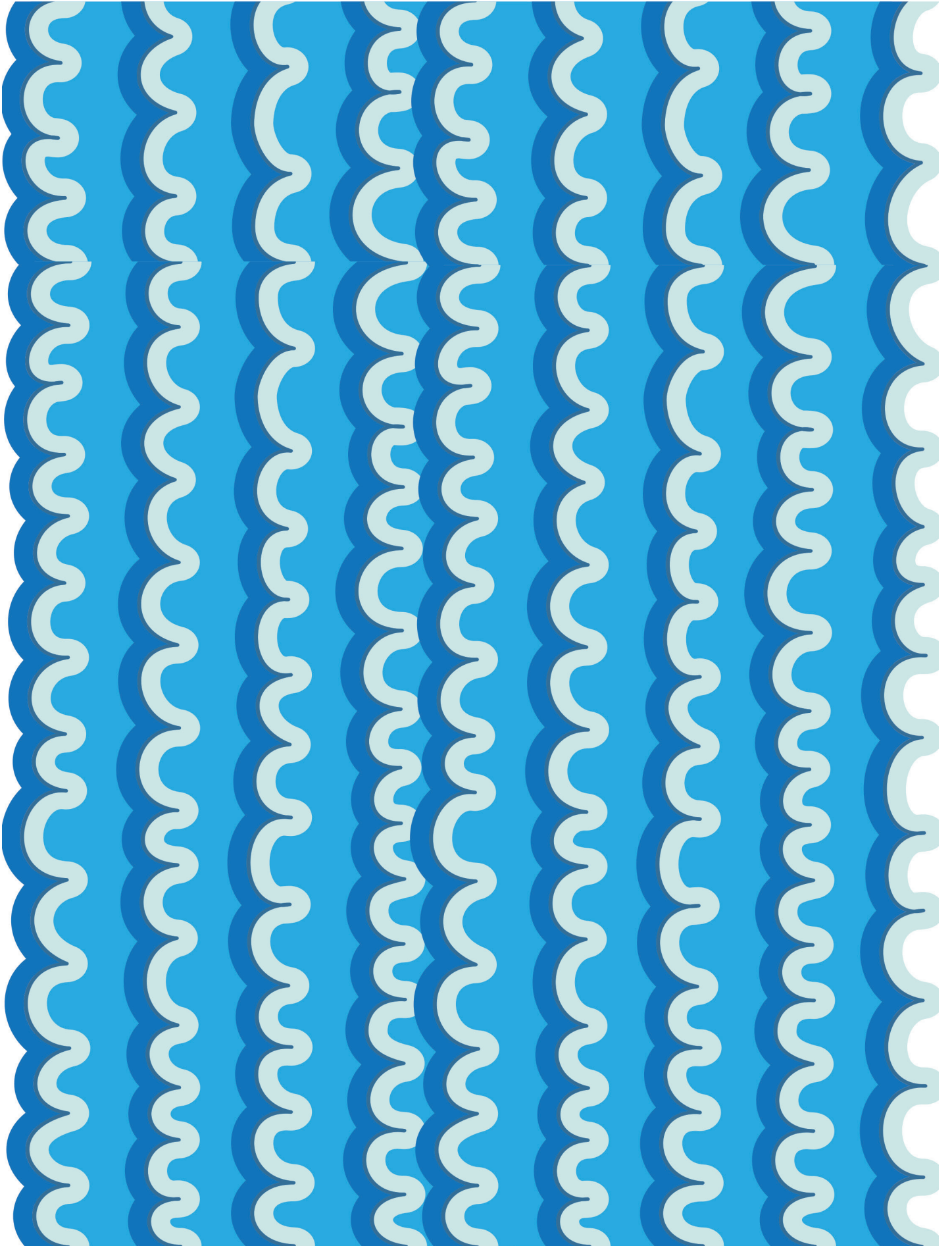
SB19B Water Pt 1 of 4
DDD 6.2 Story



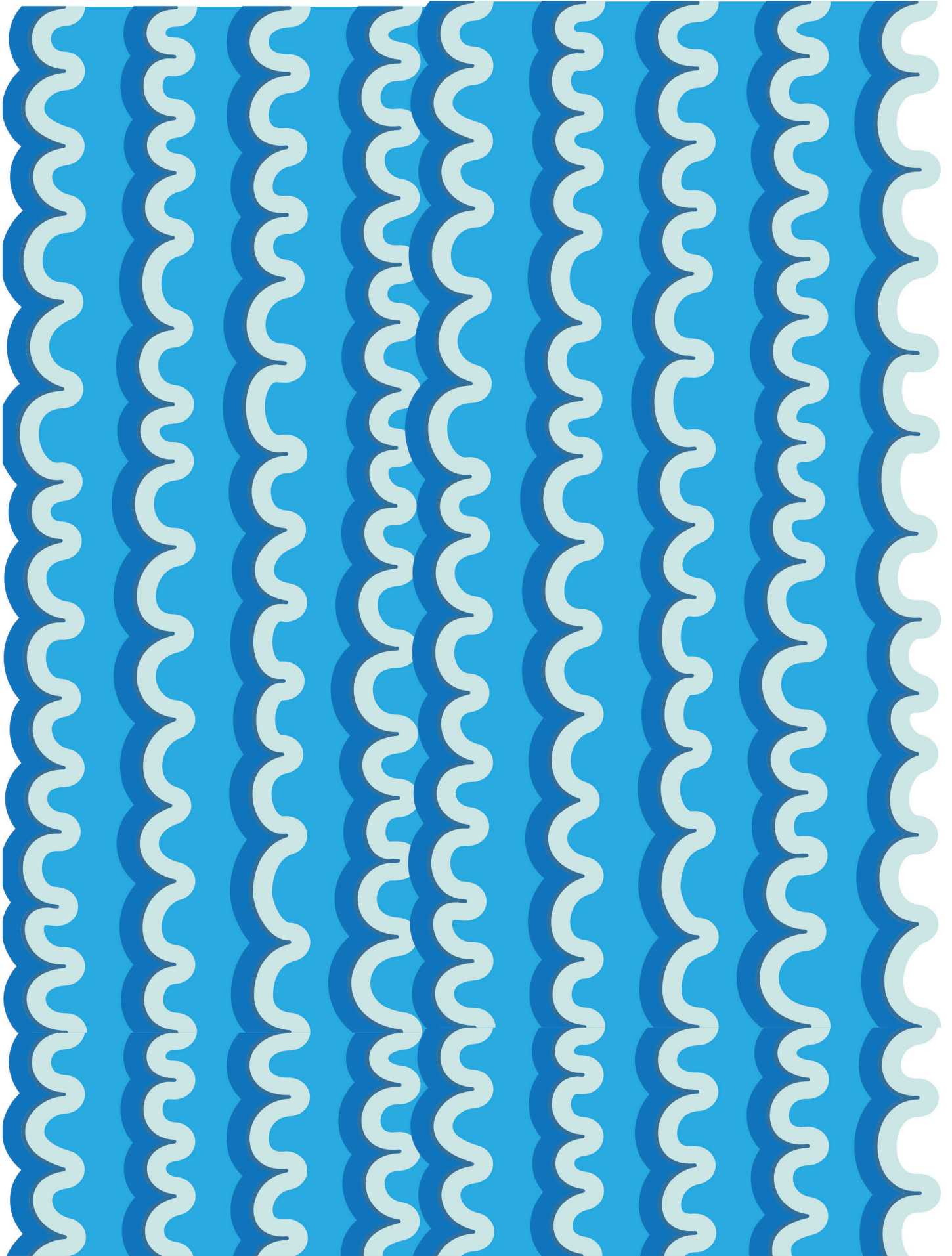
SB19B Water Pt 2 of 4
DDD 6.2 Story



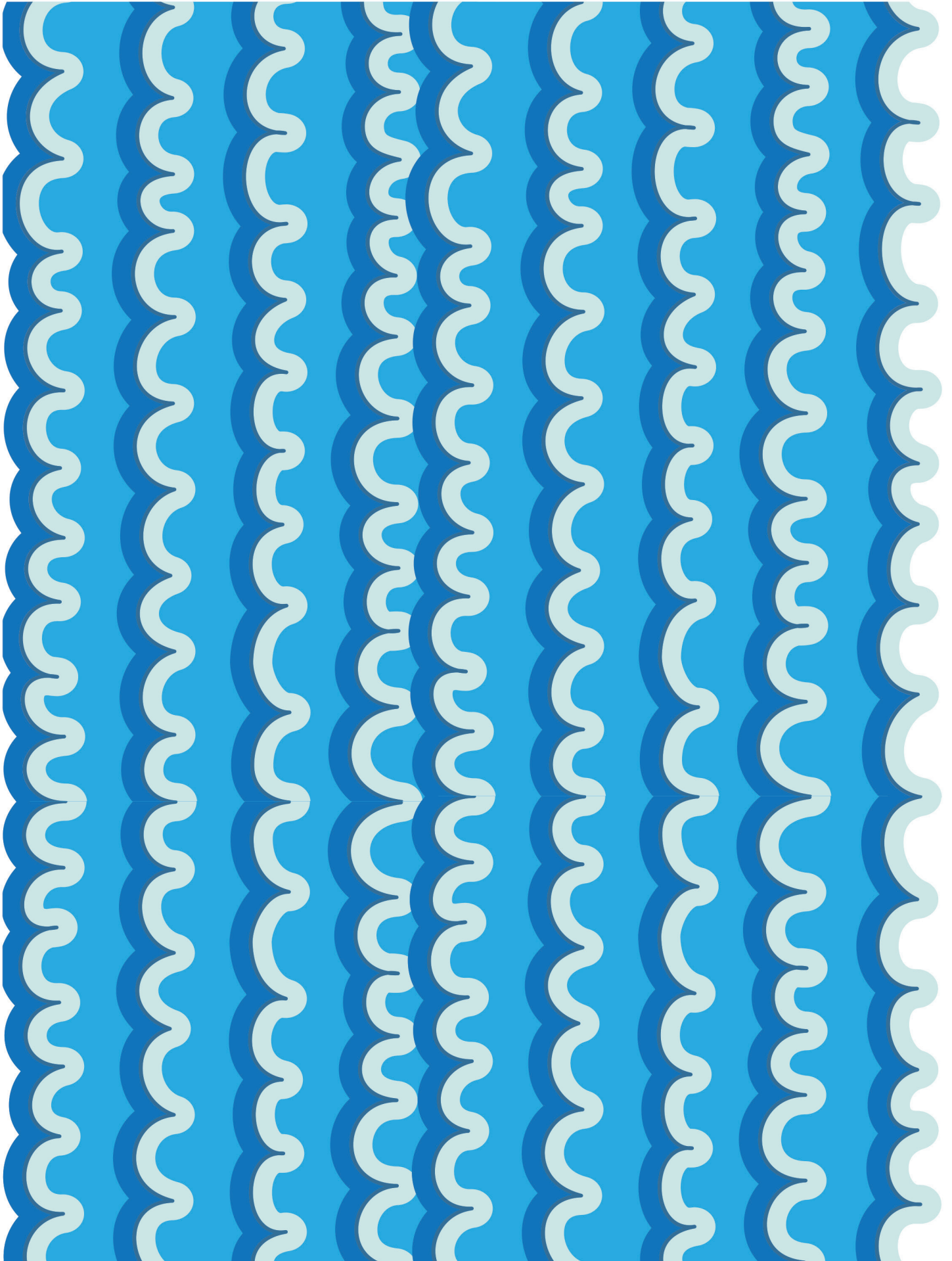
SB19B Water Pt 3 of 4
DDD 6.2 Story



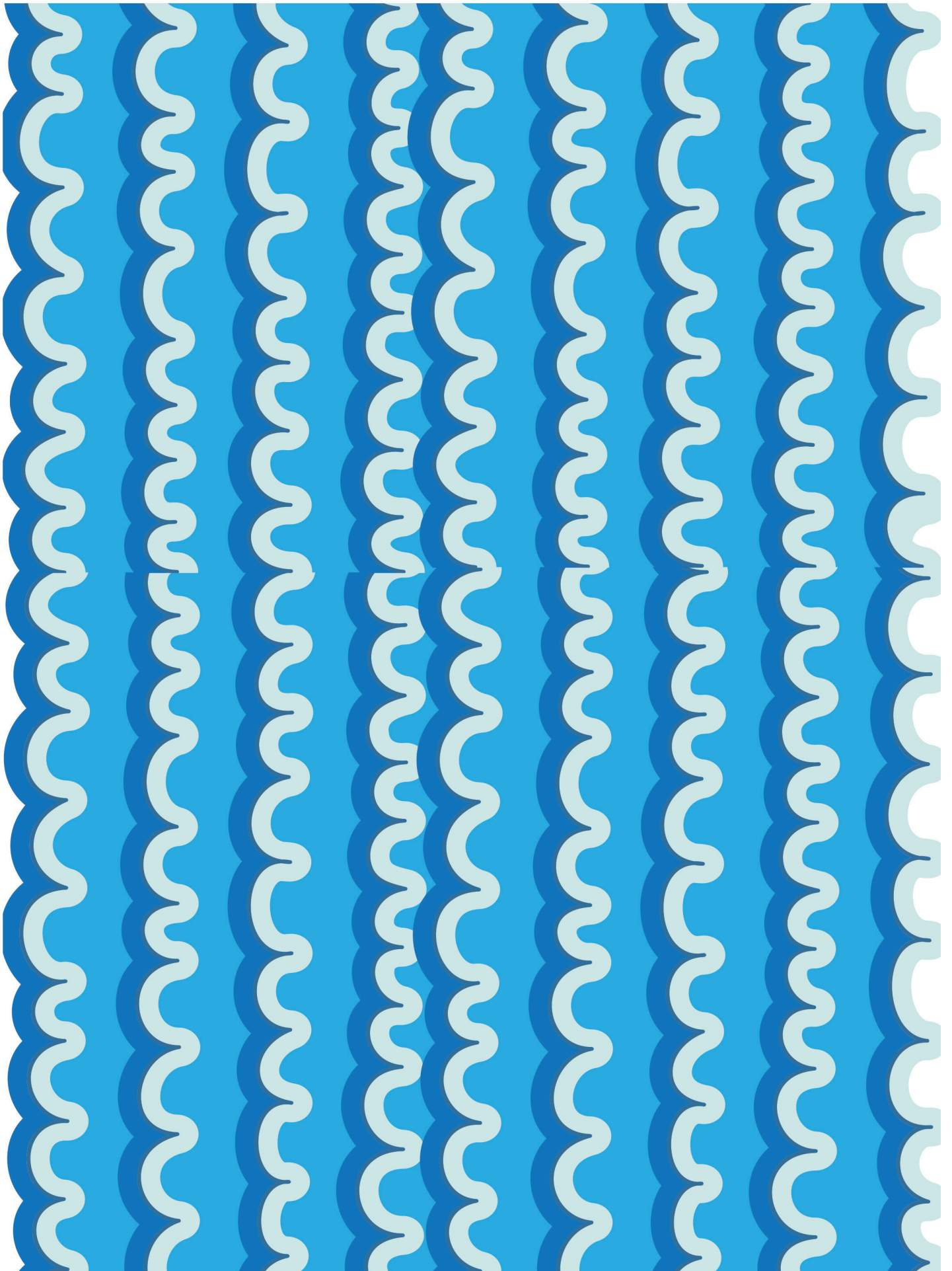
SB19B Water Pt 4 of 4
DDD 6.2 Story



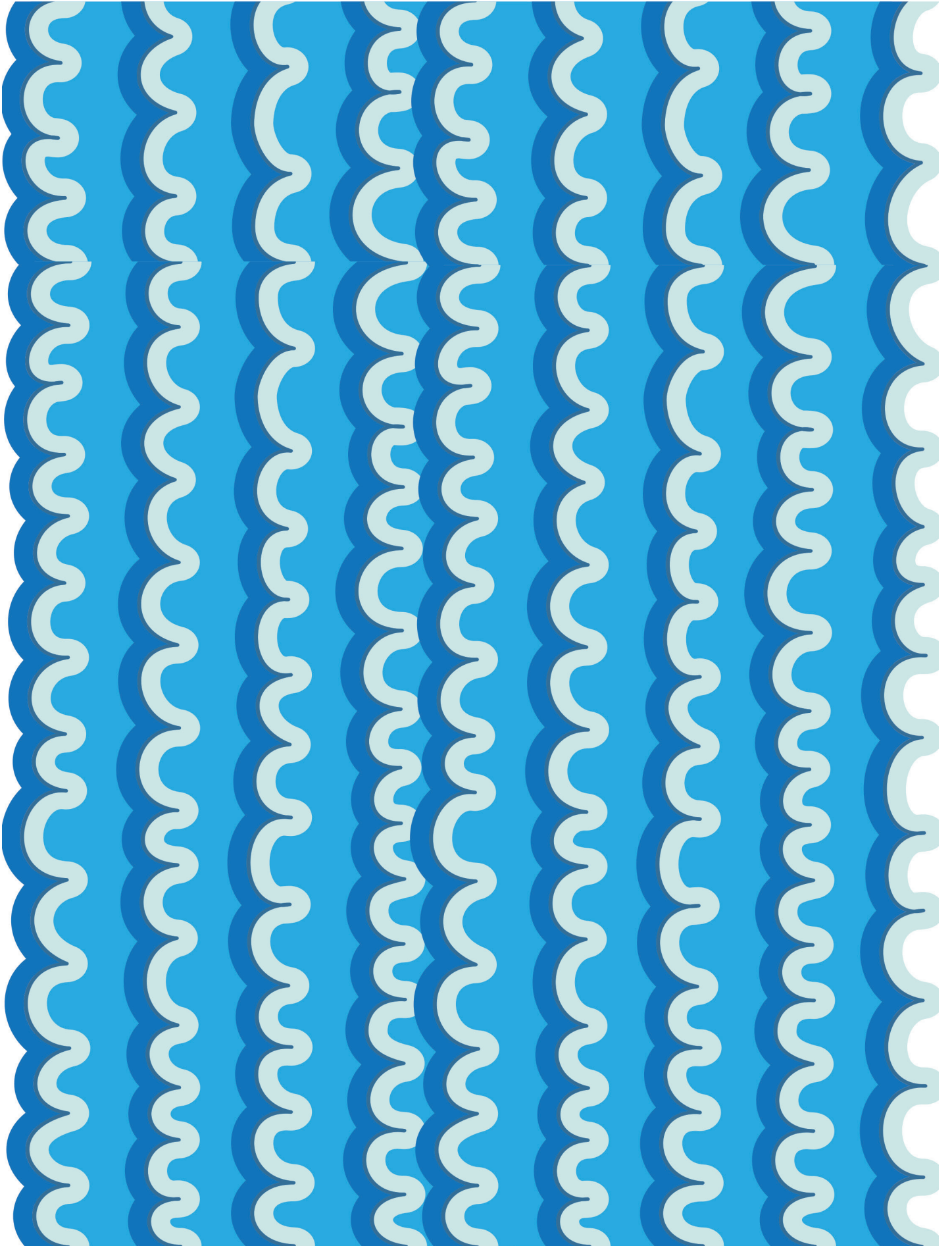
SB19C Water Pt 1 of 4
DDD 6.2 Story



SB19C Water Pt 2 of 4
DDD 6.2 Story



SB19C Water Pt 3 of 4
DDD 6.2 Story



SB19C Water Pt 4 of 4
DDD 6.2 Story