
Big Question 6, Bible Truth 1 Storyboard Background Pictures Key (BG)

Put these pictures in place on your storyboard BEFORE you tell your story.

There are no background pictures for this story

Big Question 6, Bible Truth 1 Storyboard Pictures Key (SB)

Store these pictures in numerical order in your DDD Bible Folder.
Add these to your story as you tell it. Numbers correspond to placement order.

SB1 Garden of Eden

(Green background is felt. Place felt on board with velcro, then attach the other pieces on the felt.)

SB2 Perfect Wonderfulness

SB3 Adam and Eve Enjoying Fruit

SB4 Tree of Good and Evil and Tree of Life

SB5 God's Law for Life with Him

SB6 Happy in the Garden, Obeying God

SB7 Satan, God's Enemy

SB8 Satan's Plan

SB9 The Serpent

SB10 Adam and Eve Listening to the Serpent

SB11 God Doesn't Want What Is Best for Them

SB12 Eve's Fruit

SB13 Adam's Fruit

SB14 Adam and Eve in Leaf Clothes

SB15 Adam and Eve Hiding



SB16 Telling God What They Did



SB17 Adam and Eve Hearing Punishments



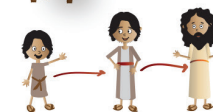
SB18 The Punishments



SB19 God's Promise



SB20 Jesus Is Born



SB21 Jesus Grows Up



SB22 Satan Doesn't Beat Jesus



SB23 Jesus Dies on Cross to Be Our Savior



SB24 Jesus in Grave



SB25 Risen Jesus



SB26 Jesus in Heaven



SB27 Jesus Beats Satan Forever



SB28 New Heaven and Earth

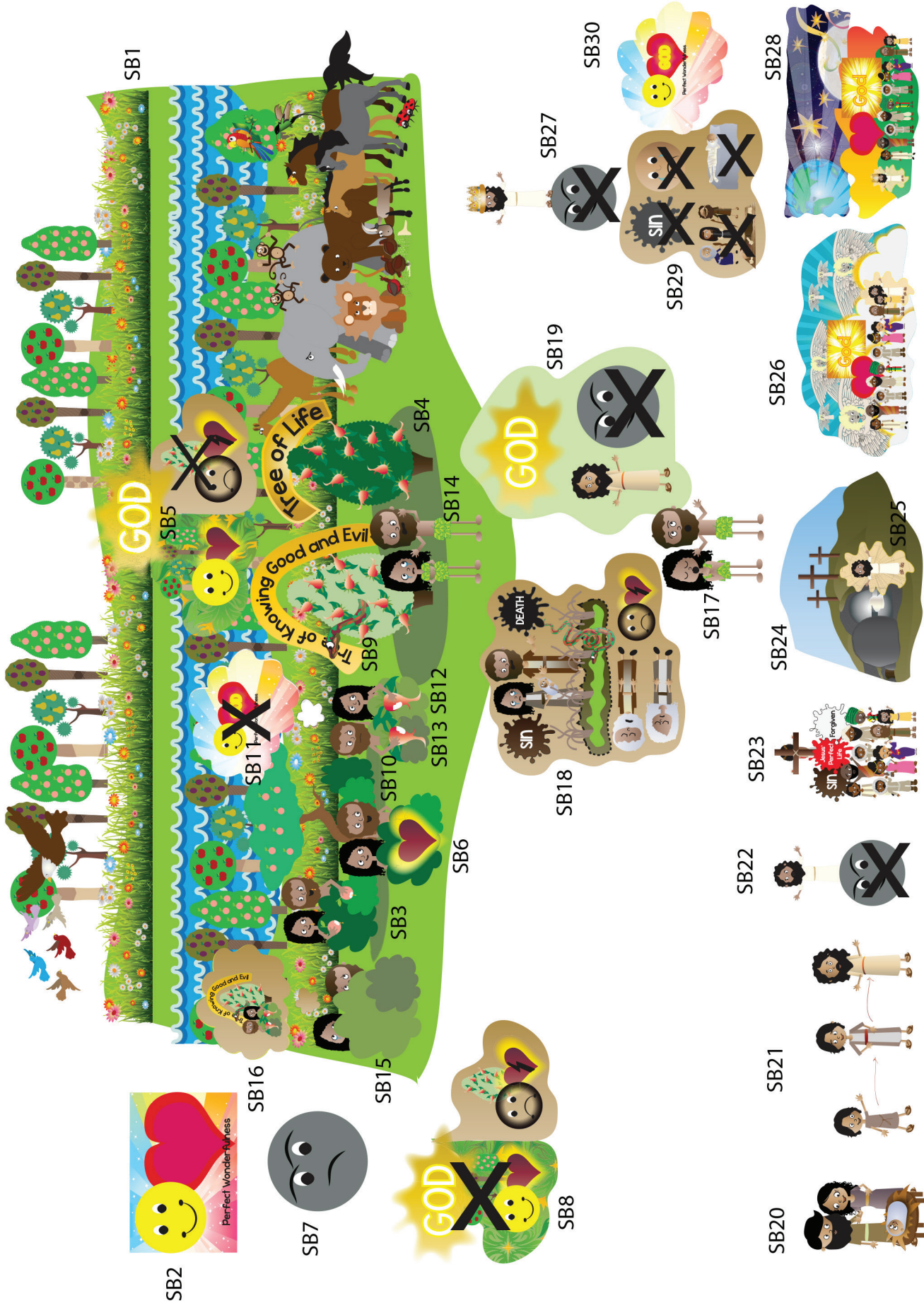


SB29 Sin and Death Are Finished



SB30 Perfect Wonderfulness Forever

Note: Use sticky tac putty rather than velcro on back of pictures placed on top of other pictures.



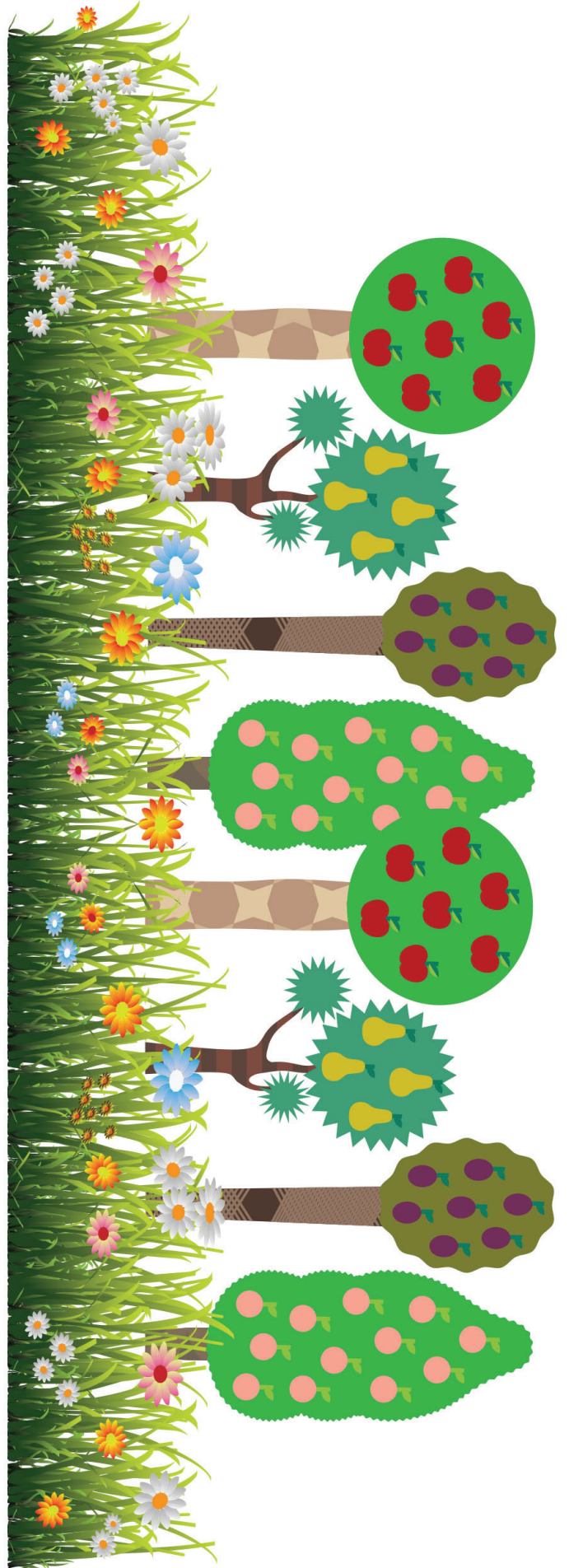
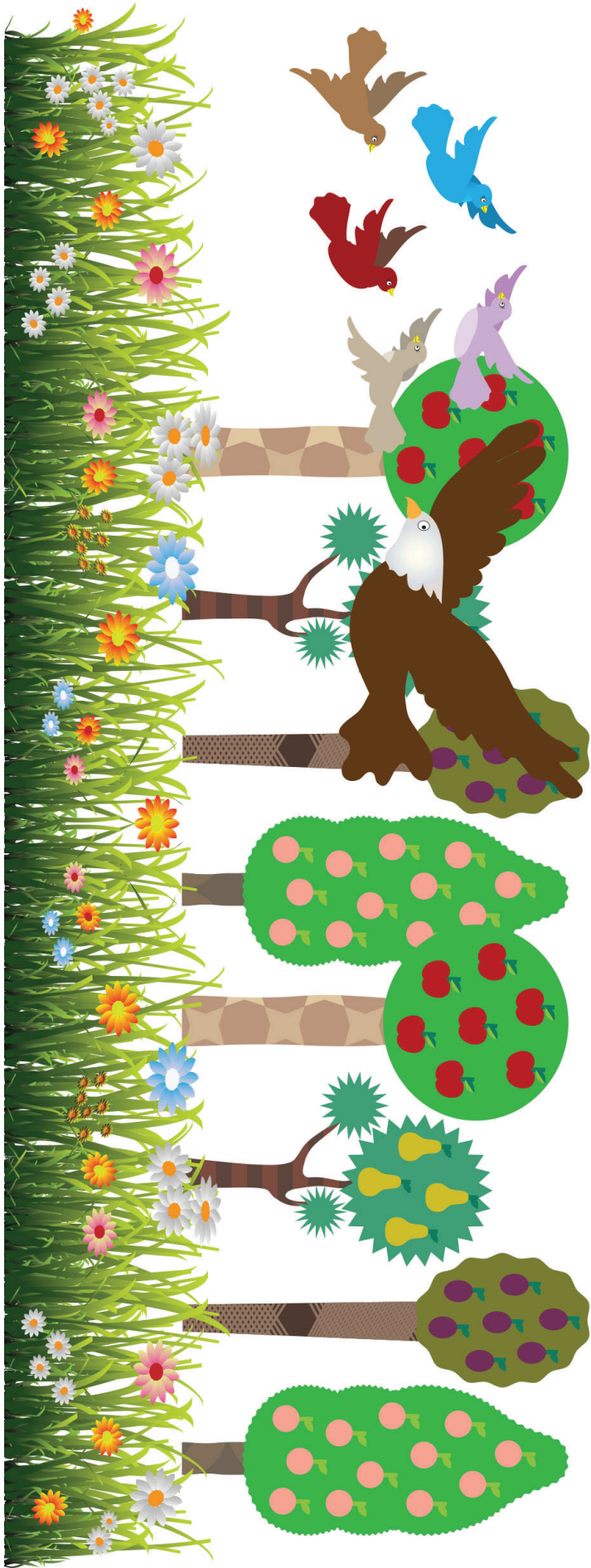
SB 1 Garden of Eden is made up of a green felt piece placed on the flannelgraph board with velcro. Then attach the additional laminated pictures to the green felt to finish the scene.

NOTE:

Some of the larger images are assembled from two or more pages. You can make these easier to fold by leaving a small gap in the lamination between the pieces. This allows you to fold the image along the gap.



leave slight gap here
to create a "hinge" for
easy folding



SB1 Garden of Eden Scenery
Trees in Background on Right
DDD 6.1 Story

SB1 Garden of Eden Scenery
Trees in Background on Left
DDD 6.1 Story



SBI Garden of Eden Scenery
River and Front Trees Pt 1 of 3
DDD 6.1 Story
Glue together and laminate



SBI Garden of Eden Scenery
River and Front Trees Pt 2 of 3
DDD 6.1 Story
Glue together and laminate

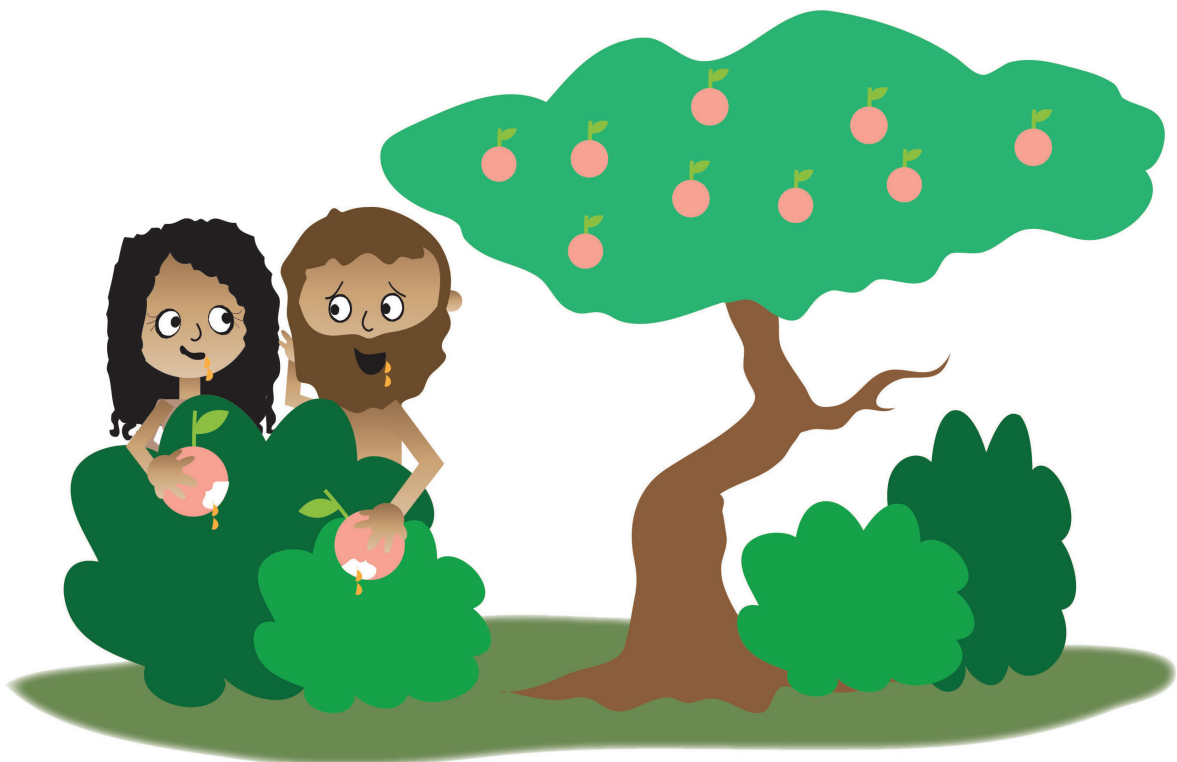
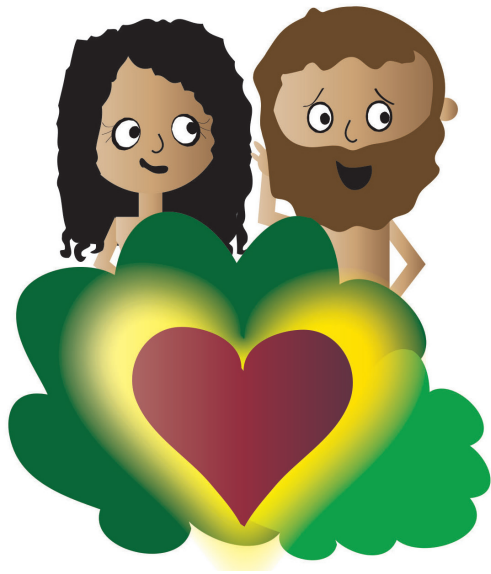


SBI Garden of Eden Scenery
River and Front Trees Pt 3 of 3
DDD 6.1 Story
Glue together and laminate



SB1 Garden of Eden Scenery
Animals in Scene Pt 1 of 2
DDD 6.1 Story
Glue together and laminate

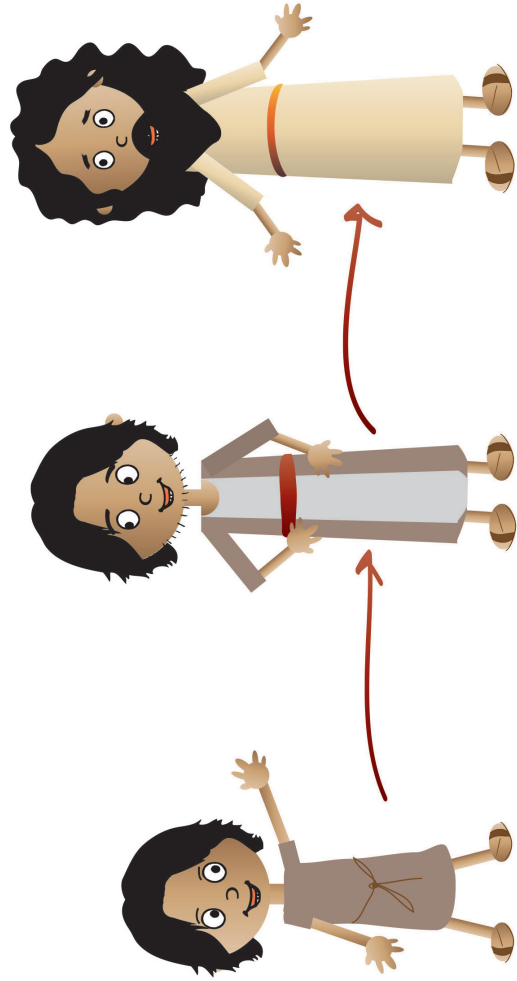
SB1 Garden of Eden 1C
5 of 6 pieces
DDD 6.1 Story
Glue together and laminate



SB20 Jesus Is Born
DDD 6.1 Story

SB6 Happy in the
Garden, Obeying God
DDD 6.1 Story

SB3 Adam and Eve
Enjoying Fruit DDD 6.1 Story



SB21 Jesus Grows Up
DDD 6.1 Story

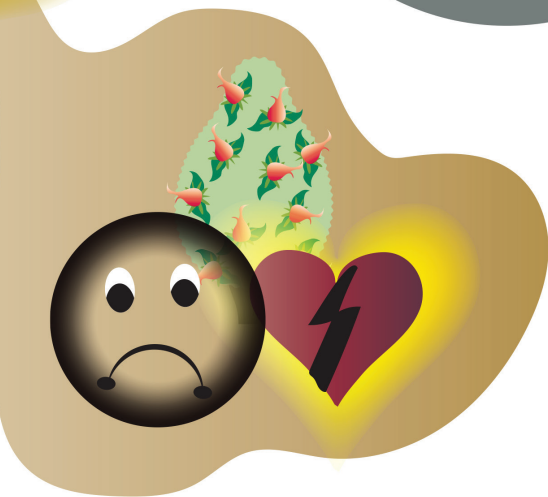
SB2 Perfect Wonderfulness
DDD 6.1 Story

SB28 New Heaven and Earth
DDD 6.1 Story



SB4 Tree of Good and Evil
and Tree of Life
DDD 6.1 Story

SB5 God's Law for
Life with Him
DDD 6.1 Story

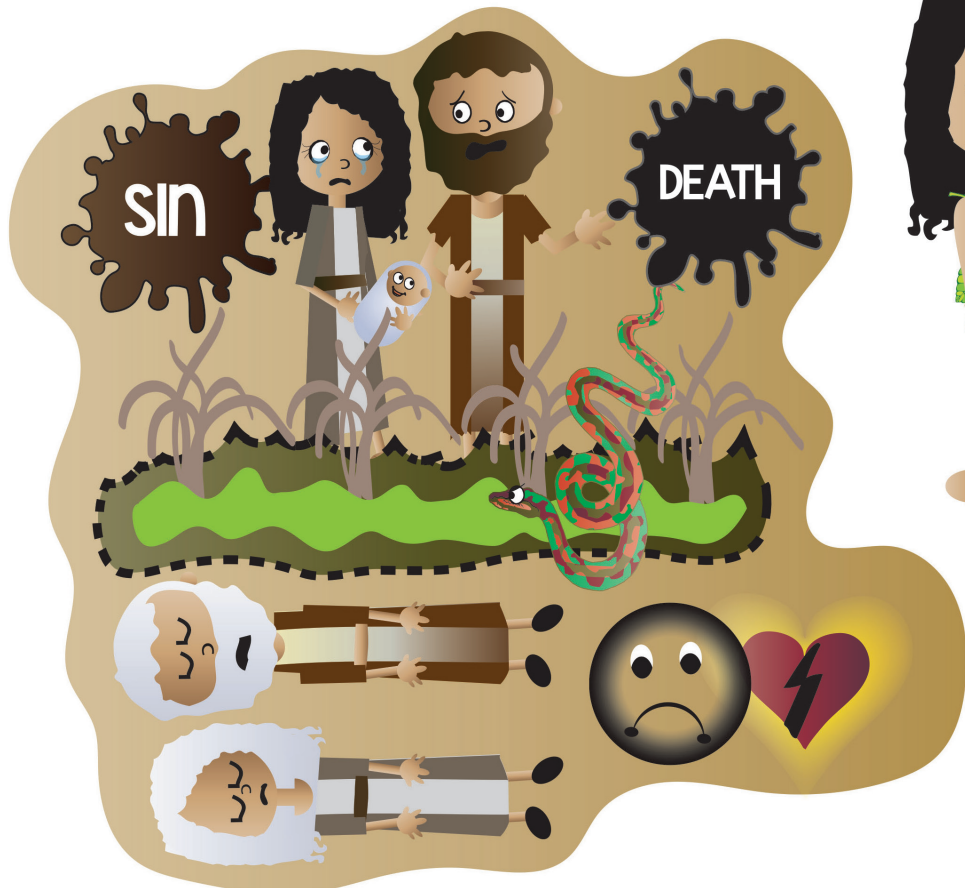
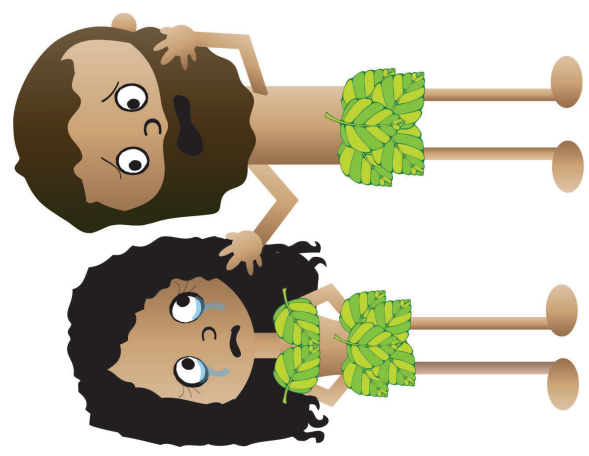
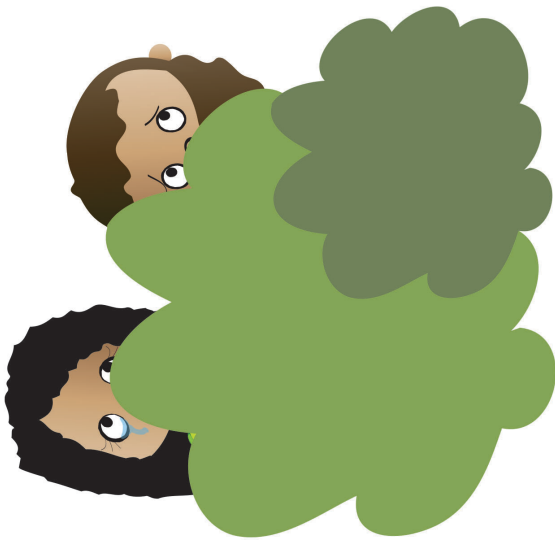


SB7 Satan, God's Enemy
DDD 6.1 Story

SB8 Satan's Plan
DDD 6.1 Story

SB27 Jesus Beats Satan Forever
DDD 6.1 Story

SB19 God's Promise
DDD 6.1 Story



SB15 Adam and Eve Hiding
DDD 6.1 Story

SB14 Adam and Eve in
Leaf Clothes
DDD 6.1 Story

SB18 The Punishments
DDD 6.1 Story

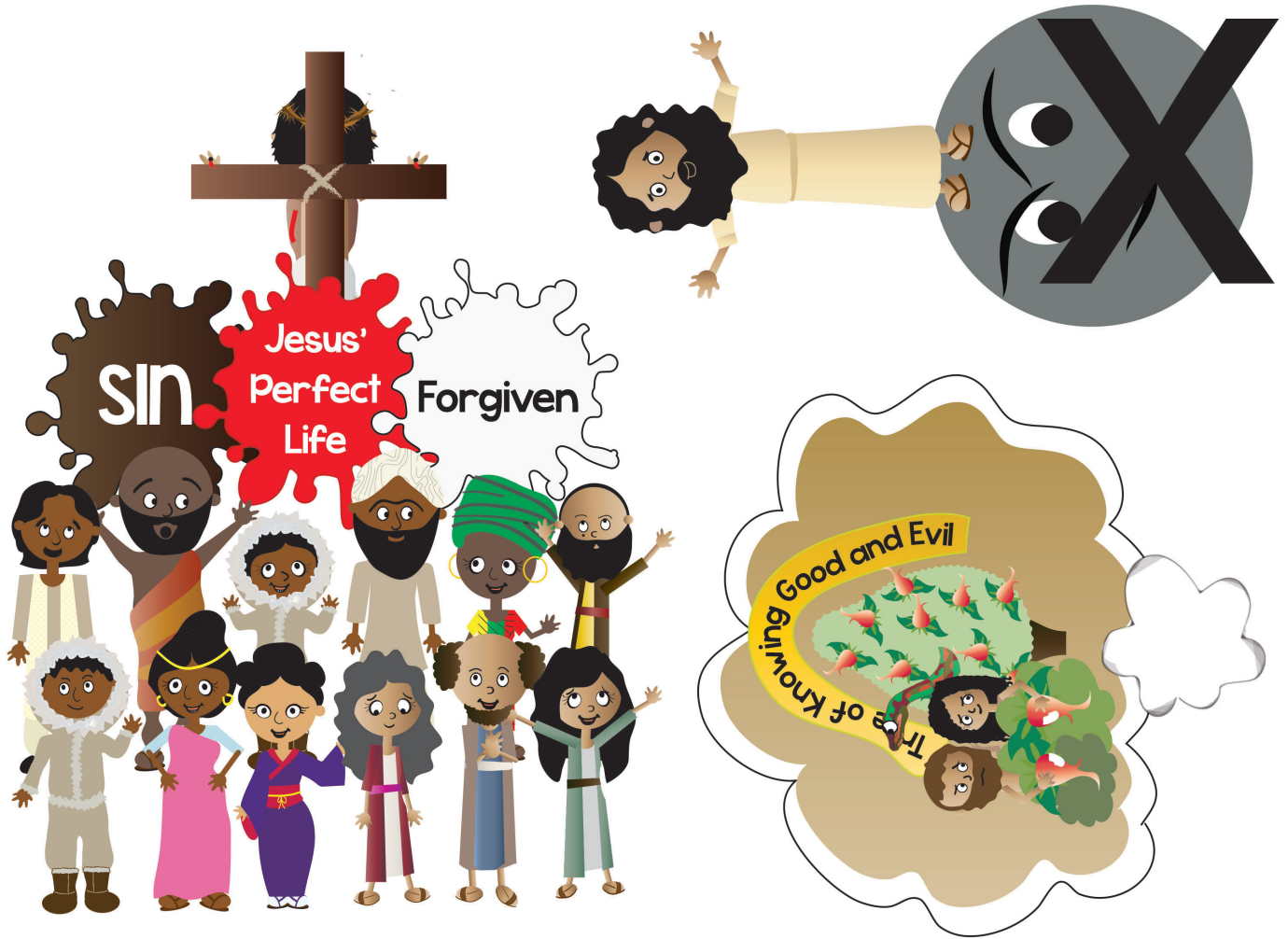
SB12 Eve's Fruit
DDD 6.1 Story

SB9 The Serpent DDD 6.1

SB13 Adam's Fruit
DDD 6.1 Story

SB10 Adam and Eve
Listening to the Serpent
DDD 6.1 Story

SB17 Adam and Eve Hearing
Punishments
DDD 6.1 Story

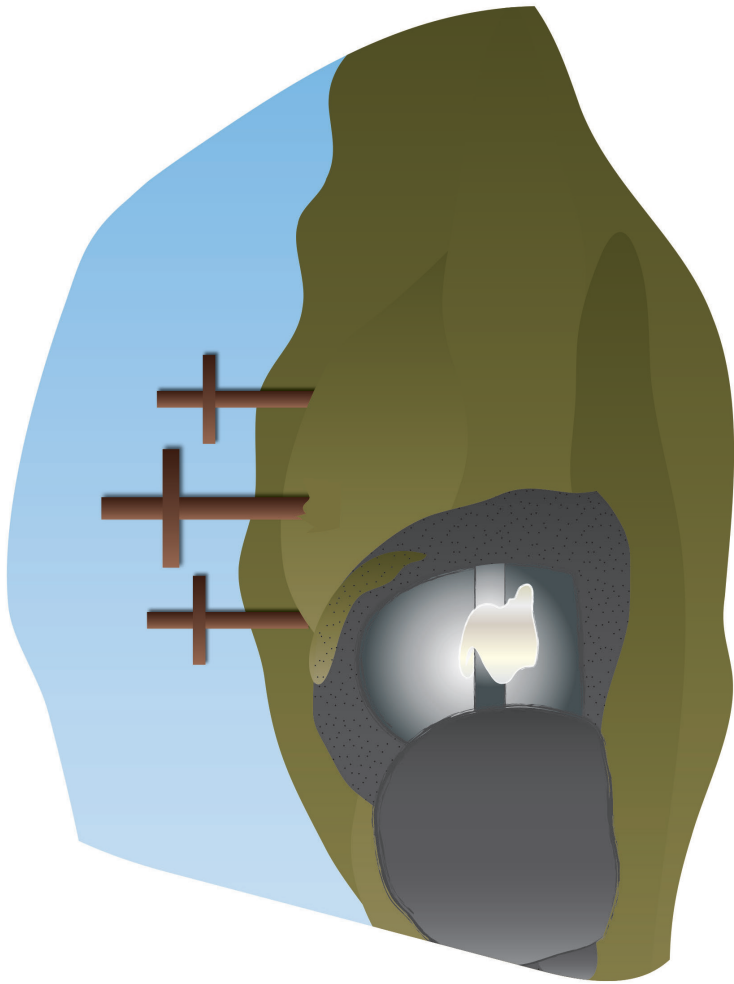


SB22 Satan Doesn't
Beat Jesus
DDD 6.1 Story

SB16 Telling God What
They Did
DDD 6.1 Story

SB23 Jesus Dies on Cross
to Be Our Savior
DDD 6.1 Story

SB29 Sin and Death Are Finished
DDD 6.1 Story



SB24 Jesus in Grave
DDD 6.1 Story

SB11 God Doesn't Want
What Is Best for Them
DDD 6.1 Story

SB30 Perfect Wonderfulness Forever
DDD 6.1 Story

SB25 Risen Jesus
DDD 6.1 Story

SB26 Jesus in Heaven
DDD 6.1 Story