
HSK 6 Storyboard Picture Key: Background Pictures (BG)

Put these pictures in place on your storyboard BEFORE you tell your story.

BG1 Garden of Eden scene



BG2 God's World



**BG3
Tree of the Knowledge
of Good and Evil**



**BG4 Cross/Tomb
Scene**



BG5 Heaven



HSK 6 Storyboard Picture Key: Storyboard Pictures (SB)

Store these pictures in numerical order in your HSK Bible Folder.

Add these to your story as you tell it. Numbers correspond to placement order.

SB1 Adam and Eve



SB11 Group of Hurting, Crying, Dying People



SB2 Perfect Love and Happiness with God



SB12 Broken Friendship with God



SB3 God's Enemy



SB13 God's Enemy Thinking He Had Won



SB4 X for Spoiled World



SSB14 X for Defeated Enemy



SB5 God's Friendship with People Broken



SB15 Savior Jesus



SB6 Serpent



SB16 Jesus Dying for the Sins of God's People



SB7 Fruit



SB17 Jesus Risen



SB8 Adam and Eve Disobeying God



SB9 Sin



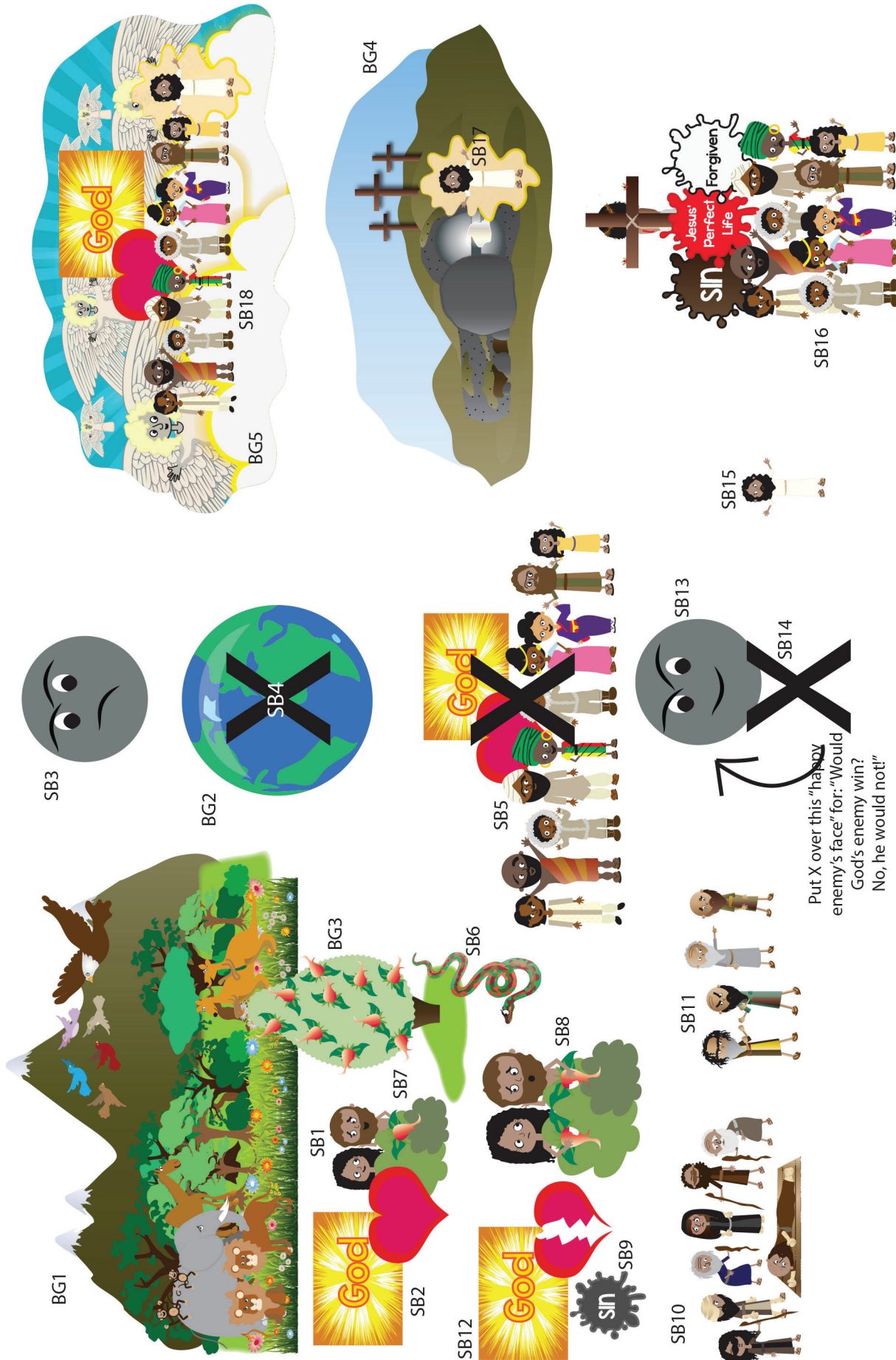
SB18 God's People Living Happy with God Forever



SB10 Group of Disobeying People



Note: Use sticky tac putty rather than velcro on back of pictures placed on top of other pictures.

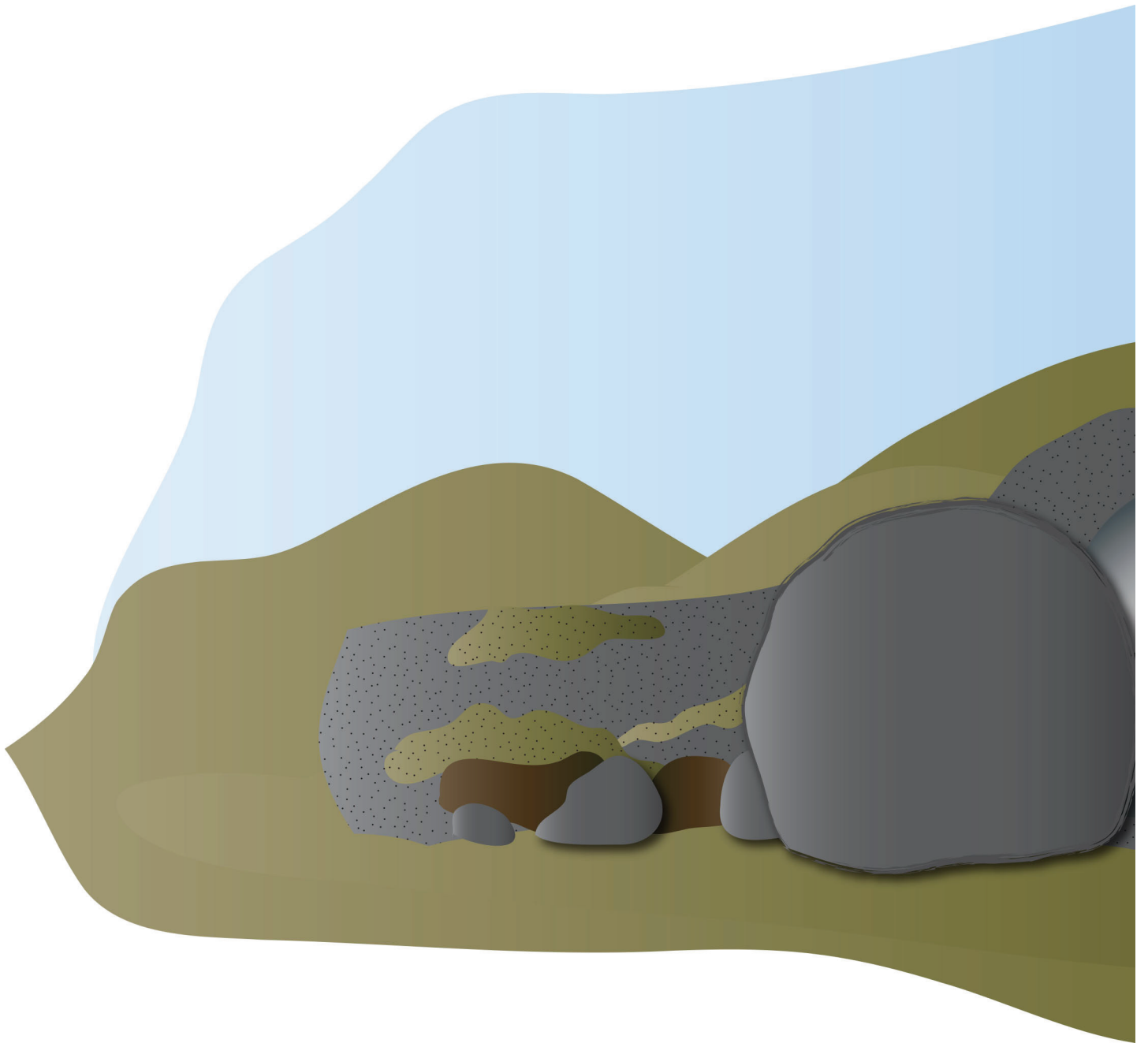


NOTE:

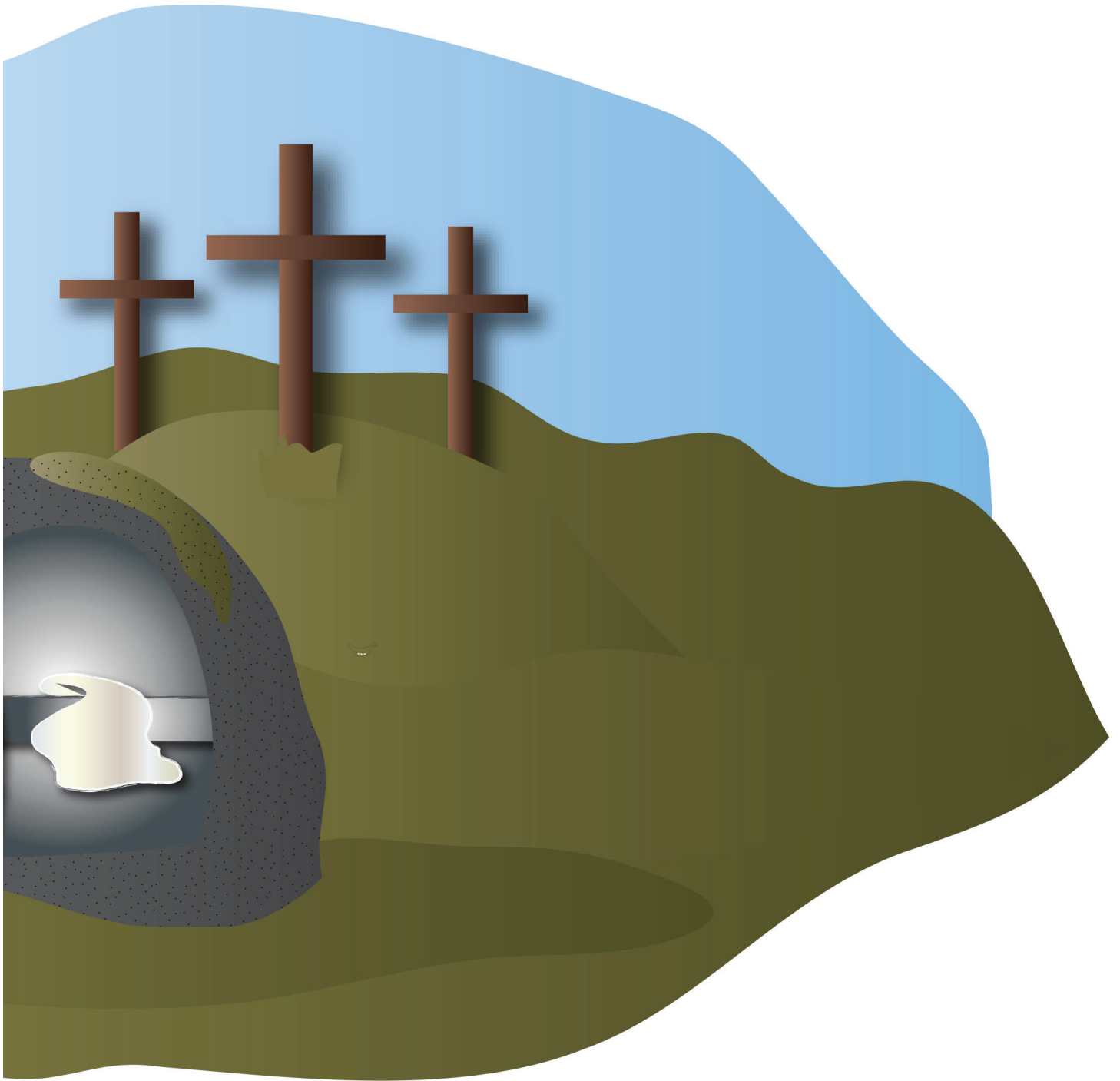
Some of the larger images are assembled from two or more pages. You can make these easier to fold by leaving a small gap in the lamination between the pieces. This allows you to fold the image along the gap.



leave slight gap here
to create a “hinge” for
easy folding



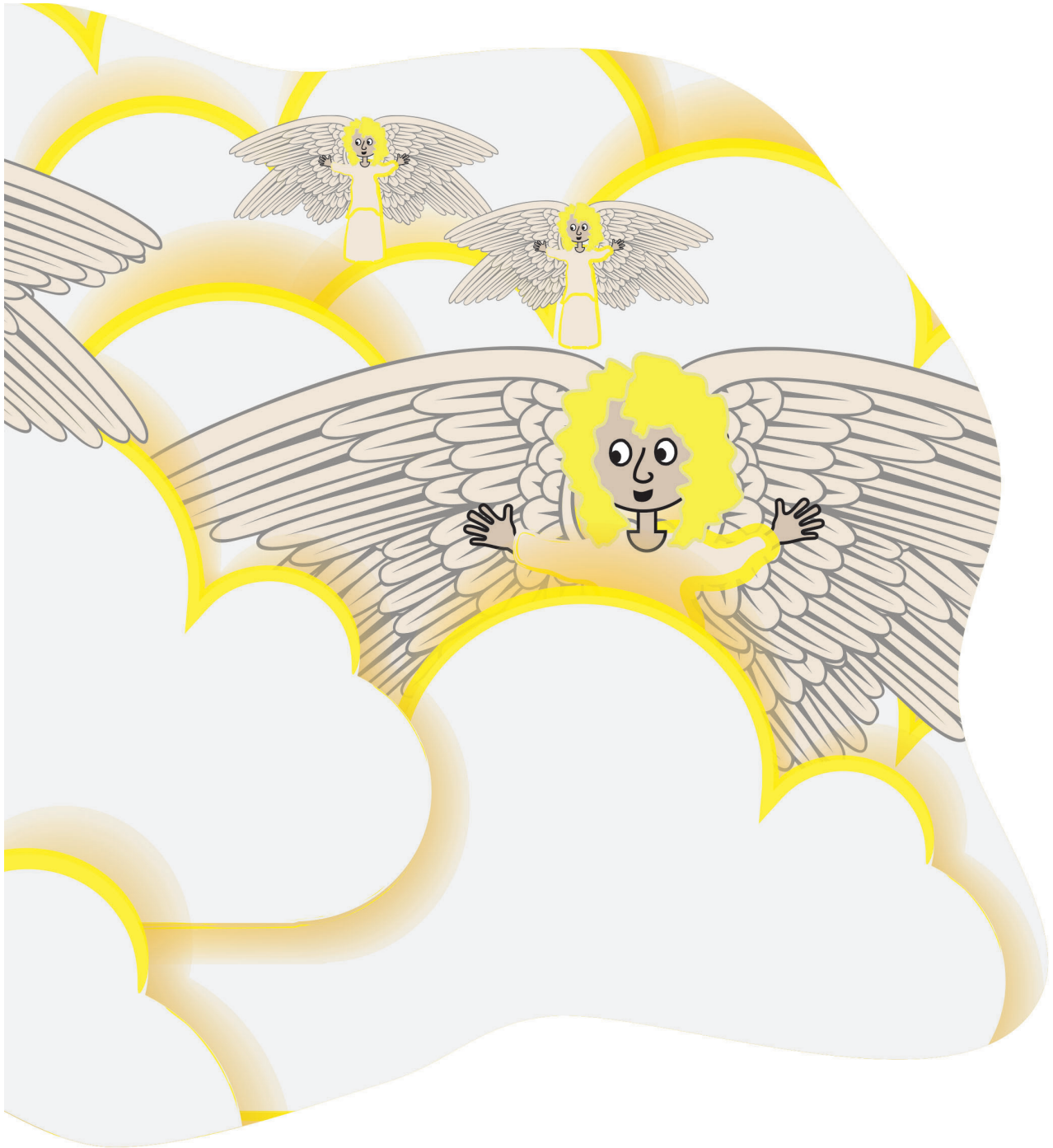
BG4 Cross/Tomb pt 1 of 2
HSK 6 Story
glue together, then laminate
Put on board BEFORE telling story



BG4 Cross/Tomb pt 2 of 2
HSK 6 Story
glue together, then laminate
Put on board BEFORE telling story



BG5 Heavens pt 1 of 2
HSK 6 Story
glue together, then laminate
Put on board BEFORE telling story



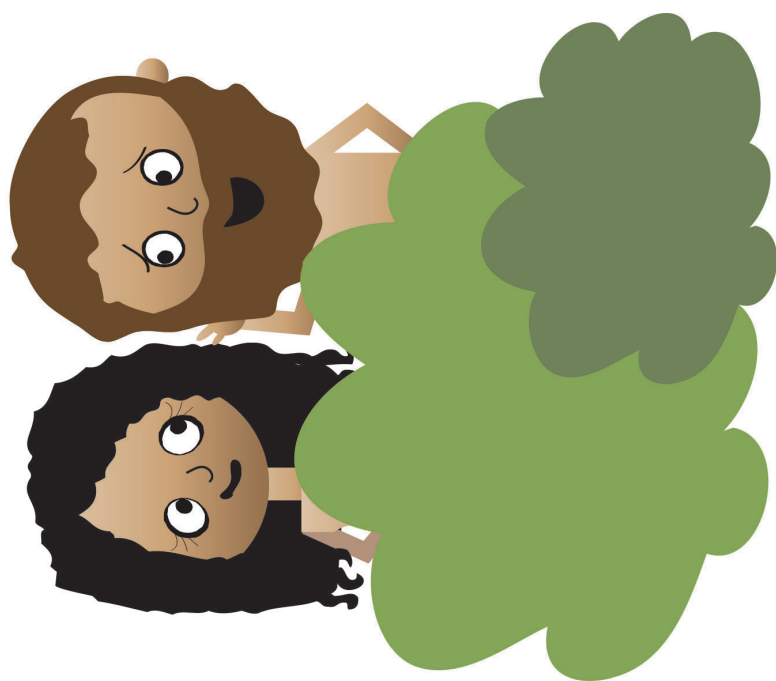
BG5 Heavens pt 2 of 2
HSK 6 Story
glue together, then laminate
Put on board BEFORE telling story



BG1 Garden of Eden Scene pg 1 of 2
HSK 6 Story
glue together, then laminate
Put on board BEFORE telling story

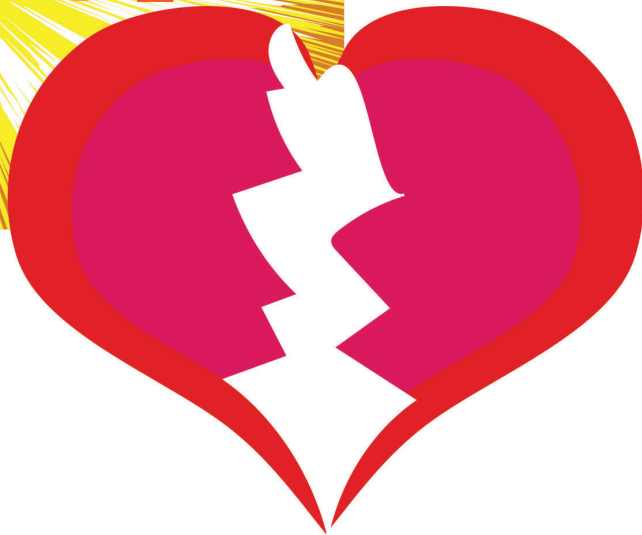
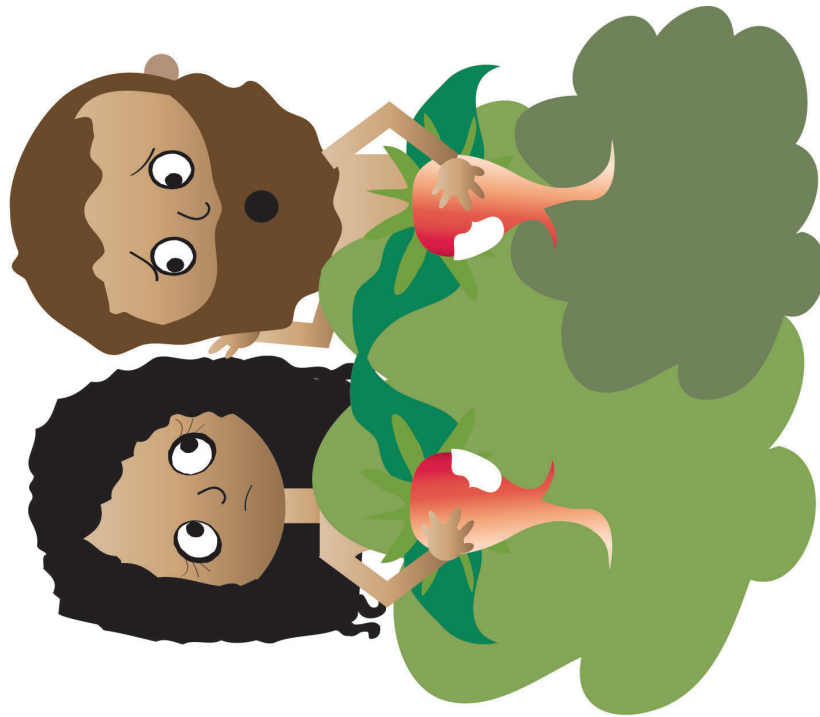


BG1 Garden of Eden Scene pg 2 of 2
HSK 6 Story
glue together, then laminate
Put on board BEFORE telling story



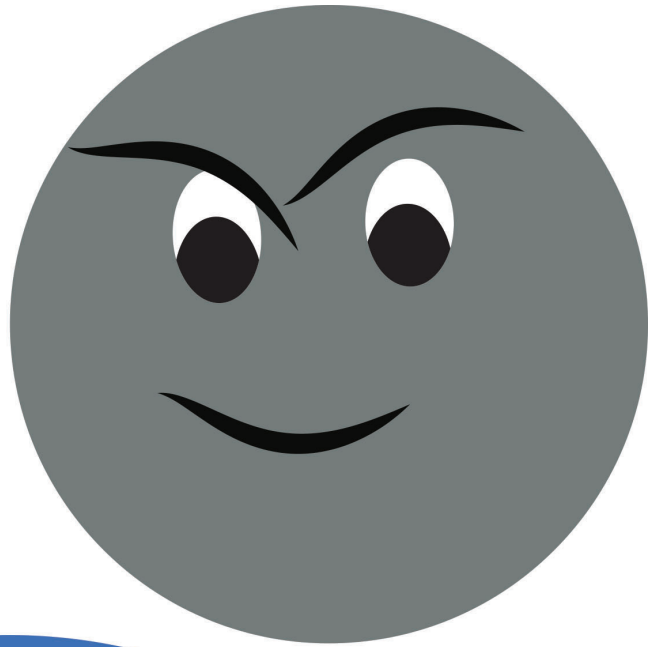
SB1 Adam and Eve
HSK 6 Story

SB2 Perfect Love and Happiness with
God
HSK 6 Story



SB8 Adam and Eve Disobeying God
HSK 6 Story

SB12 Broken Friendship with God
HSK 6 Story



SB13 God's Enemy Thinking
He Had Won
HSK 6 Story

SB3 God's Enemy
HSK 6 Story

BG2 God's World
HSK 6 Story

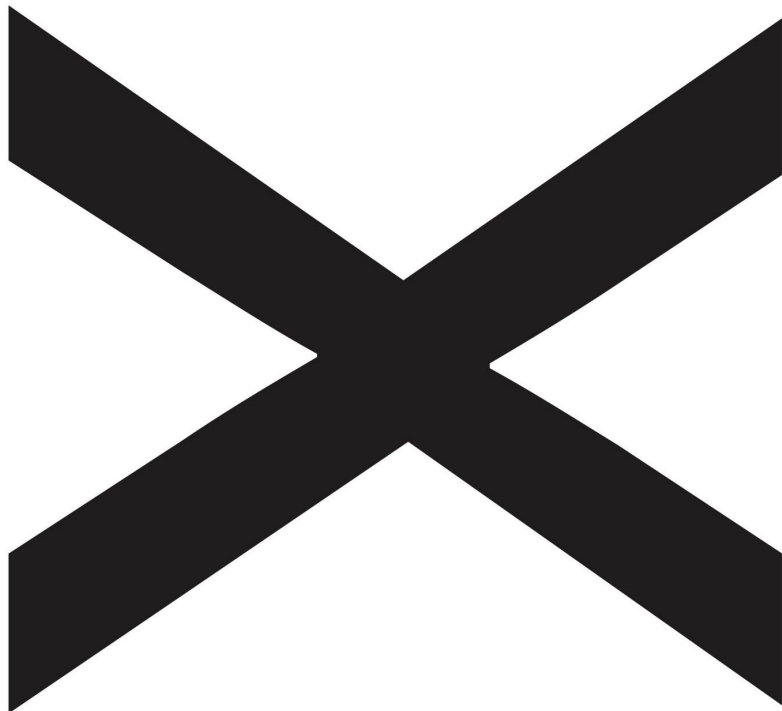


SB18 Forever Happy with God in
Heaven
HSK 6 Story



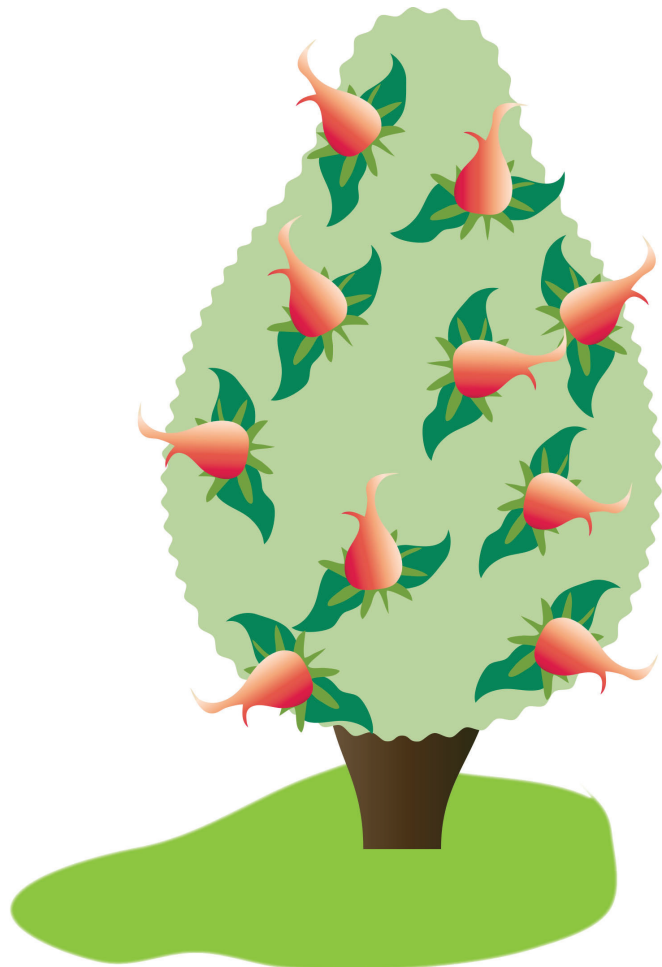
SB7 Fruit from the Tree
HSK 6 Story

SB5 Perfect Love and Happiness
with God Broken
HSK 6 Story



SB16 Jesus Pays for the Sins of God's
People
HSK 6 Story

SB4 X for Spoiled World
HSK 6 Story



SB15 The Savior, Jesus
HSK 6 Story

SB9 Sin
HSK 6 Story

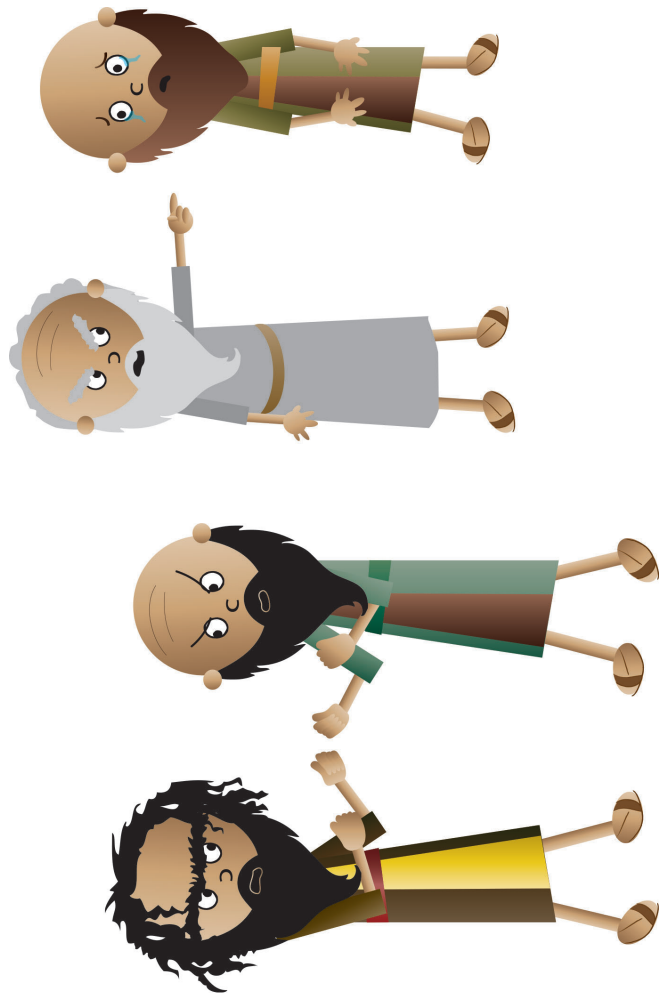
SB6 Serpent
HSK 6 Story

SB17 Risen Jesus
HSK 6 Story

BG3 Tree of the Knowledge of
Good and Evil
HSK 6 Story



X



SB11 Group of Hurting,
Crying, Dying People
HSK 6 Story

SB10
Group of Disobeying
People
HSK 6 Story

SB14 X for Defeated Enemy
HSK 6 Story