

Note: Use sticky tac putty rather than velcro on back of pictures placed on top of other pictures.



SB28



SB29



SB30



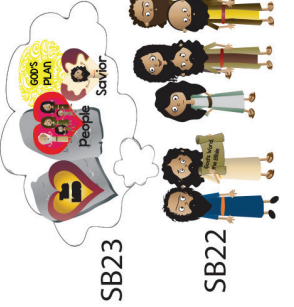
SB31



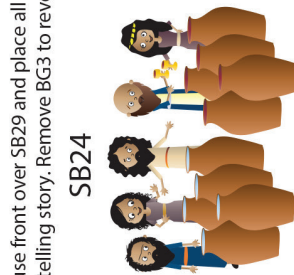
SB32



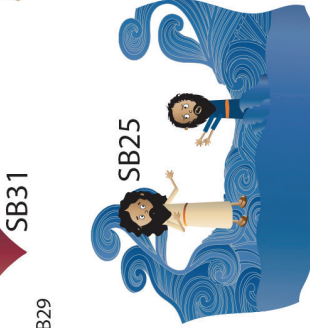
SB33



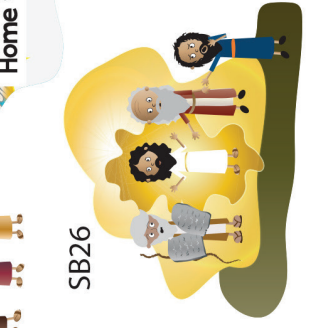
SB23



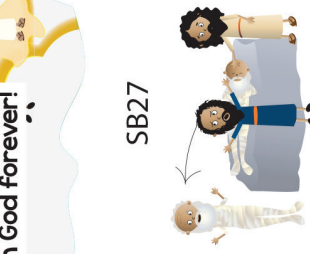
SB24



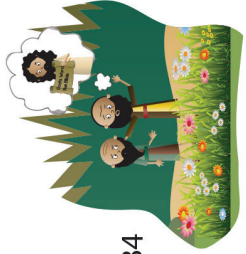
SB25



SB26



SB27



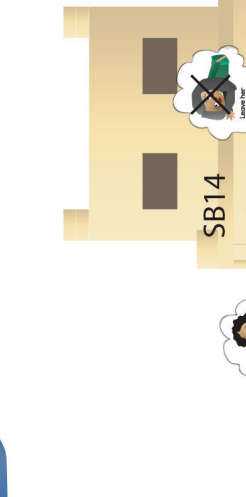
SB4



SB9



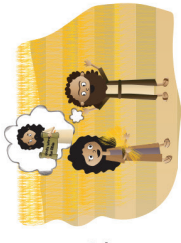
SB10



BG1



BG2



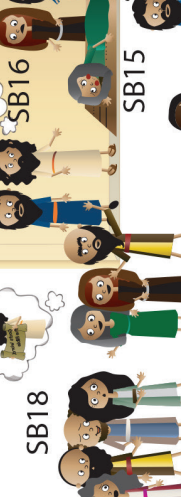
SB2



SB7



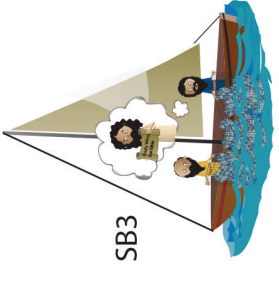
SB8



SB12



SB13



SB3



SB6



SB11



SB14



SB15